

Historic, archived document

Do not assume content reflects current scientific knowledge, policies, or practices.

68.91

LIBRARY RECEIVED MAR 8 U. S. Department of Agriculture

Columbia & Kanogan NURSERY COMPANY
Wenatchee, Washington

Everything for the
Planter!
 Fruit Trees
 Shade Trees
 Shrubs
 Vines
 Roses
Landscape Service

IT'S NOT A
HOME
 UNTIL IT'S
 PLANTED



BLACKJON
 TRADE MARK REG.
 The early coloring Jonathan.
 Early Jonathan always brings
 a premium.

RICHARED
 The Solid Cherry-Red Delicious.
 The **DELICIOUS** Supreme
 More and earlier color.

"See And O"

RED ROME
 Nearly all apples color extra
 fancy grade.

CANDOKA
 U.S. PLANT PAT. # 51
 "THE FUZZLESS PEACH"

"See And O"

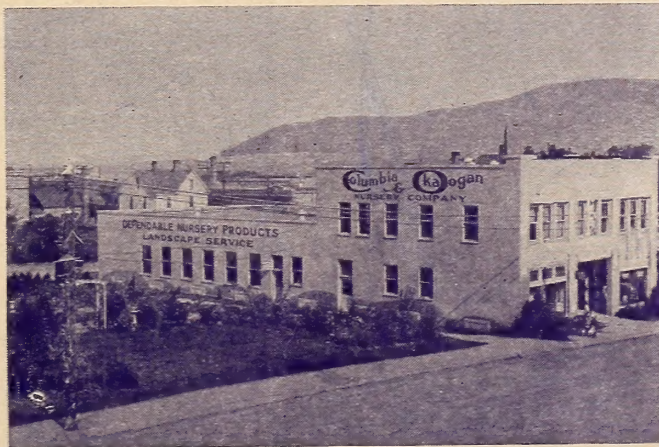
WINESAP
 A Solid-Red Winesap.
 Earlier and more red color.

BLACKMACK
 TRADE MARK REG.
 A beautiful early coloring
 solid-red McIntosh

BLAXTAYMAN
 TRADE MARK REG.
 Richer and Deeper Red
 than ordinary Stayman

SHOTWELL
 (U.S. PLANT PAT. NO. 90)
DELICIOUS
 SOLID RED EARLIEST COLORING

Colors darker and earlier than
 Richared



Office and Packing House
 Located At Wenatchee, Washington

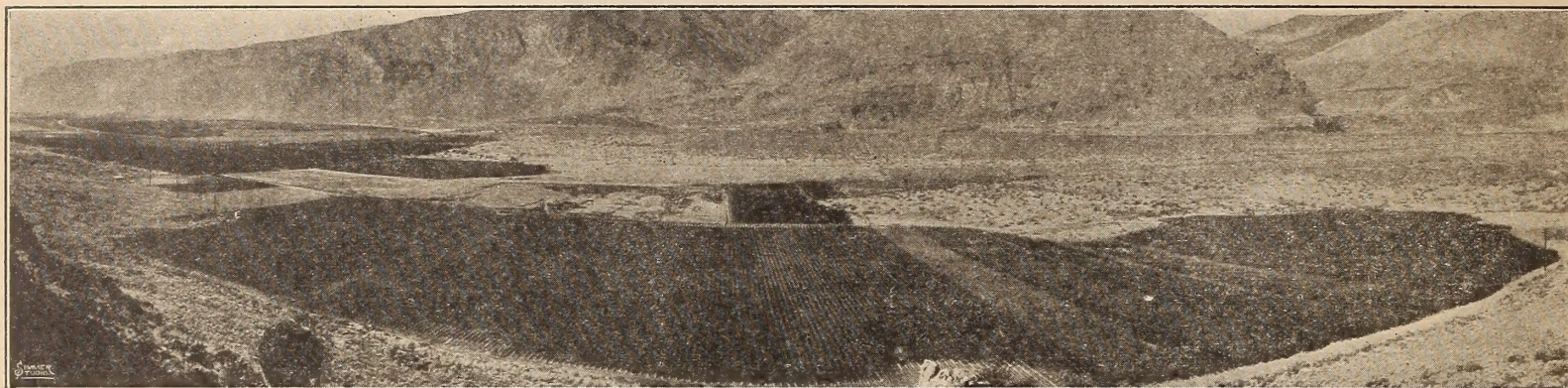
RILAND
 U.S. PLANT PAT. # 70

APRICOT
 Earliest good commercial variety.

Better Nursery Stock for Particular Planters

Columbia & Okanogan NURSERY COMPANY

Wenatchee, Washington



Where "C & O" Nursery Stock is Grown on Virgin Soil -- Free From Insect Pests
Washington's Largest and Oldest Nursery Established in the Year 1906

In order to obtain the best results in any enterprise, conscientious and careful effort must be the foremost thought. In this catalog it is our pleasure to place before you an attractive list of dependable fruit trees, ornamentals, roses, shrubs, etc., produced by men with many years of experience in growing, packing and handling nursery stock.

We solicit your patronage upon the basis of our ability to render expert and dependable service and deliver real value in stock. Our experience in the nursery business at Wenatchee, Washington, dating back to the year 1906, enables us to render such service.

In making an orchard or beautifying the home the first cost of the nursery stock used is a very small item compared with the results obtained, provided, best stock obtainable is used. Get the best stock from the most reliable source.

Wenatchee being located in the geographical center of the State of Washington enables us to make quick delivery of nursery stock through the well organized facilities of railroad, motor truck and airline transportation lines. With a rich, fertile soil, a long growing season, and our own system of water control under irrigation, we are protected against droughts; also, since there is but little rainfall during the late summer and early fall, we can always supply the proper amount of moisture by irrigation, and thus are enabled to produce nursery stock of the finest quality. The fall season is sufficiently cold properly to mature and ripen thoroughly the young nursery stock after the water has been taken off. Wenatchee has earned the title of "Apple Capitol of the World" from the fact that here more apples of the finest quality are grown than in any similar area in the world. Also large quantities of peaches, pears, prunes, cherries and apricots are successfully grown.

In 1906 when the C. & O. Nursery was founded, the total amount of fruit produced and shipped from North Central Washington was 60 cars. In one year the Wenatchee-Okanogan district shipped approximately 25,000 car loads. The major portion of this fruit was produced on trees from our nursery.

GENERAL INFORMATION

SHIPPING SEASON: Our shipping season begins in the fall in late October, and continues until late spring. With our frost-proof storage and warehouse we are enabled to make shipment at any time.

SHIPPING FACILITIES: Our shipping facilities are excellent and we can make prompt shipment by rail, motor freight, express or parcel post. Unless specified we will use our discretion as to the best method of shipment.

OUR GUARANTEE: We guarantee our nursery stock to be true to name; otherwise, we will replace free or refund the purchase price.

We guarantee our stock to be first quality and to reach you in good, live, growing condition. Examine it carefully upon arrival, and if you do not find it so, advise our office immediately, and do not plant it unless you hear from us. In the meantime take good care of it by properly heeling in and watering.

Our stock is carefully handled, of good vitality, and under normal conditions will grow.

Any complaints about failure to start growth must be made in writing, and direct to our office **WITHIN THIRTY DAYS AFTER PLANTING.**

INSPECTION: The growers' interests are further safeguarded through careful and rigid inspection by licensed State Inspectors of the Department of Horticulture. Each shipment is inspected before it leaves our packing house and a certificate of such inspection is attached to package. Look for the State Inspection Certificate when you receive your nursery stock; it is your **guarantee** that the stock is clean and free from insect pests and disease.

Middleburg, Vermont: "You certainly sent me beautiful nursery stock."



A FIELD OF "C. & O" NURSERY ONE YEAR APPLE TREES

ACCEPT OUR FREE SERVICE OFFER

In presenting you with this catalog, please note that it is "LOOSE LEAF." So far as we know the first loose leaf catalog to be put out by any nursery. The pages may be taken out and new ones inserted or more may be added. It is our purpose to supply you from time to time with new pages containing new stock descriptions. We ask that you keep this catalog as it is perpetual and we will keep it up to date for you.

Read the catalog carefully, make out your list of stock wanted and we will make delivery as you desire.

If you have a new planting problem or are in doubt as to what to plant feel free to ask us to help you, without obligation on your part, and we will do our best to furnish the desired information.

Maybe you wish to improve the home grounds and want to match our ideas with yours; then just send us a rough sketch indicating which is north (accompanied with a photograph, if possible) and we will try to solve your problems. Just a few dollars put into shrubs and shade trees properly planted and cared for, will give a pleasing transformation to even a humble home.

Our nursery was established in 1906 and since that time we have been constantly striving to supply dependable nursery stock—stock that will be both pleasing and profitable to the most exacting planter.

At the present time stock from C. & O. Nursery is growing in all parts of the world, wherever deciduous fruits can be grown. We ship everywhere and guarantee arrival of stock in good condition.

Do not overlook our FREE stock offer on page 29.

PLANTING INSTRUCTIONS

Complete instructions are printed on the back of a shipping tag which will be attached to every box or bale.

MODERN NURSERY PACKING HOUSE

Our new nursery packing house is one of the most modern in the country. It has insulated walls and roof, with special forced-air ventilation through the building and special facilities for maintaining a cool temperature. This enables us to hold nursery stock dormant and in good condition for planting until trees out-of-doors are in full leaf. Here trees and plants are graded and prepared for shipment under the proper conditions, with every safeguard against exposure or damage.

USUAL DISTANCES FOR PLANTING

Apple	25 to 35 feet apart	Grapes.....	7 to 10 feet apart
Pear.....	20 to 35 feet apart	Currant.....	4 to 6 feet apart
Sweet Cherry	25 to 40 feet apart	Gooseberry....	4 to 6 feet apart
Sour Cherry	} 16 to 24 ft. apart	Blackberry	3 to 4 ft. by 5 to 7 ft.
Plum.....		Raspberry	3 to 4 ft. by 5 to 7 ft.
Prune.....			
Apricot.....			
Peach.....			

Number of Trees or Plants Required Per Acre—How to Estimate

Rule—Divide 43,560 (the number of square feet in an acre) by the number of square feet for each plant. The result is the number required for an acre.

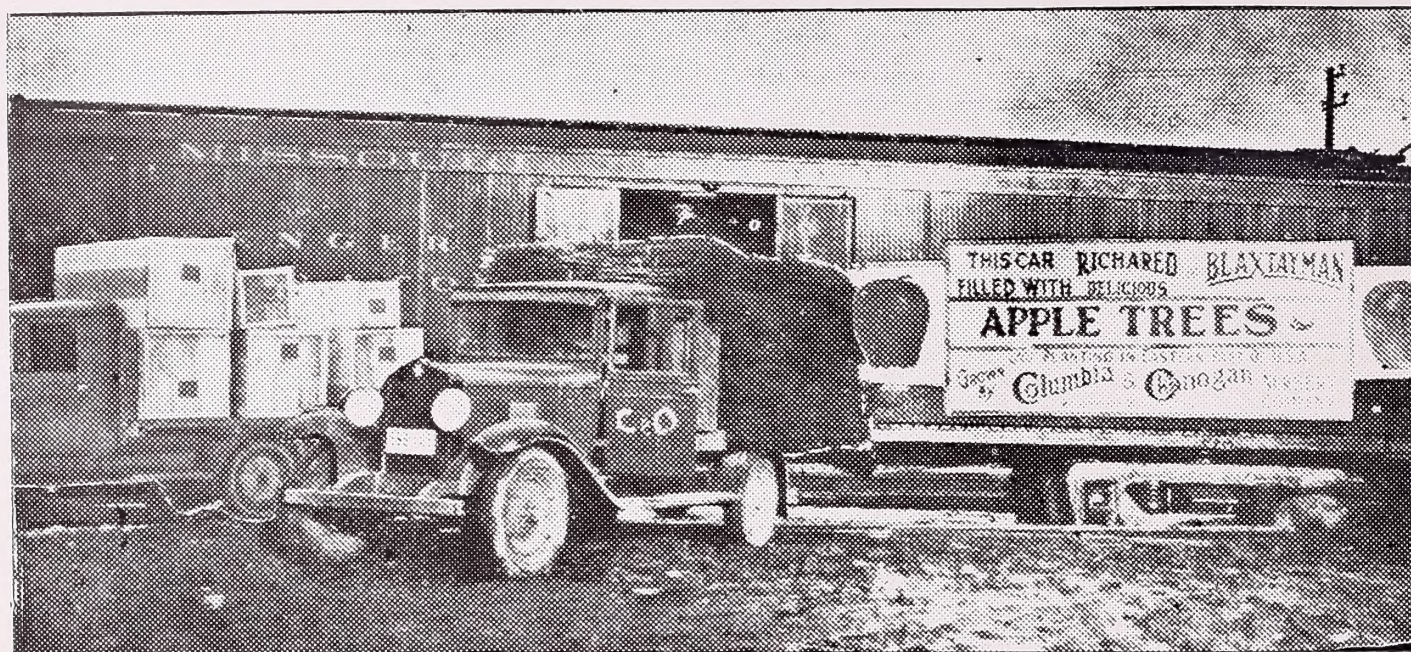
Example—(Square system) Trees 20

by 25 feet apart; 20 times 25 equals 500 square feet; 43,560 divided by 500 equals 87 trees per acre.

If trees are planted on the Triangular System, 15 per cent more than for the Square System will be required.

Strawberry—Field culture, 1 to 1½ by 2½ to 3½ feet; garden culture, 1 to 2 feet.

(From Japan) "I am glad to inform you that the Richared Delicious trees are growing very well."



A Carload of "C & O" Nursery Stock For Eastern Distribution

BETTER VARIETIES PAY

The new varieties of all-red apples described in the following pages demonstrates that better apples bring to the grower bigger profits.

Owing to the added color over the common varieties, a much greater percentage of Extra Fancy fruit is obtained from the new red apples. **Extra Fancy** pays the profit.

Speaking before the Washington State Horticultural Association, the Production Manager of the American Fruit Growers, Inc., estimated that the additional red color resulting in increased Extra Fancy grade produced by three of these new red varieties would result, under North Central Washington conditions, in an increased per-acre profit to the grower as follows:

RICHARED DELICIOUS—A per acre profit of \$630.00 instead of \$490.00, or a net increased profit of 28% per acre to the grower.

SEEANDO WINESAP—\$280.00 per acre profit as against \$210.00 per acre for the ordinary Winesap—or a net increased earning for the grower of 33%.

BLACKJON—That Blackjon, due to earlier color and better shipping quality, would show a \$210.00 per acre profit, as against \$70.00 per acre average loss on common Jonathan—actually a difference of \$280.00 per acre in favor of Blackjon.

A NEW RACE OF RED APPLES

The amazing and outstanding results in high grade apples obtained from these new red varieties did not come by mere chance, but these wonderful fruits have been made possible after years of labor, testing, proving and selecting by the C. & O. Nursery Co.

For instance, in developing the Richared Delicious, nineteen (19) separate and distinct strains of "red" Delicious were selected and thoroughly tested in our proving grounds. No two possessed the same characteristics throughout. Some had no merit—something lacking in shape, color, size, keeping qualities, etc.

Since the introduction of the Richared Delicious, another similar Delicious has been introduced by our company. The "Shotwell" Delicious—a genuine Delicious sport and an apple of excellent merit.

Likewise in the development of the **BLACKJON, SEEANDO RED ROME, BLACKMACK, SEEANDO WINESAP, BLAXTAYMAN**—the most thorough tests were conducted over a long period of time, and each variety reproduced through suc-

cessive generations. No tree was offered for sale until we were sure the fruit measured up to what we claimed for it. Each and every one of these new red varieties has been most carefully selected—most thoroughly tested—and conclusively proved as to merit.

A WORD OF CAUTION TO PLANTERS

Quality merchandise is often imitated. Various so-called "red" strains are being offered for sale. The antecedents of many such "strains" are indefinite—their merits uncertain. Very few, if any, have been submitted to the rigid tests and long periods of actual performance that has placed these new C. & O. red apples in front rank. Do not be satisfied with something just as good as," insist upon planting tested, proved varieties, sold under genuine trade mark names.

These new varieties are being planted by the country's leading fruit growers they are known and proved for quality and merit and have the endorsement of leading horticultural authorities everywhere.



President A. T. Gossman of C. & O. Nursery Co. and Prof. O. M. Morris of Washington State College inspecting a 3 year old tree of "Richared" Delicious. All are Extra Fancy color.

The Original Solid - Red (BLUSH TYPE) Delicious

RICHARED

TRADE MARK REG. U.S. & CANADA

The DELICIOUS *Supreme*

Introduced by us in 1926.
It has gained favor each successive season.

RICHARED
TRADE MARK REG. U.S. PAT. OFF.
The DELICIOUS Supreme

ORDINARY DELICIOUS

Early Color!
Late August



Late Color!
Late Sept.

RICHARED
TRADE MARK REG. U.S. PAT. OFF.
The DELICIOUS Supreme

Colors Nearly All Extra Fancy Grade Delicious Colors About One Half Extra Fancy Grade

Richared Delicious is proven. It is the BEST. Get the Genuine—something else “just as good” may prove disappointing.

MOST BEAUTIFUL APPLE GROWN—Fully colored at the proper harvest time, for Delicious. (If Delicious generally were picked at the proper time, there would be but few of sufficient color to grade extra fancy. Often, in order to get good color, they are left on the tree too long, and are soon mealy—unfit to eat.) RICHARED Delicious being fully colored grade nearly 100% Extra Fancy for color and their keeping qualities are excellent. Richared Delicious can be picked EARLIER, avoiding loss from windfalls or early season freeze.

RICHARED, The greatest of all fruit-stand apples. RICHARED Delicious stands out. It attracts the eye of the consumer. RICHARED retains its firm texture, juice and flavor much longer than the ordinary Delicious.

NEW MARKET CONDITIONS DEMAND NEW PLANTINGS OF IMPROVED VARIETIES—

Pioneer orchardists made money with inferior varieties such as Ben Davis and Missouri Pippins, etc. The modern and future grower must depend on new and better varieties, and high color bud sport strains for profit.

“In the year of 1927 we planted several acres of RICHARED Delicious apples. In 1933 these trees had a crop of about 2300 boxes. In 1934 the crop was 4400 boxes.

On all my sales of this fruit I have received premium prices for the RICHARED—over ordinary Delicious, of from twenty-five to thirty-five cents per box. My percentage of Extra Fancy grade has been much higher than with ordinary Delicious.

At the present time I have about three carloads of RICHARED Delicious in storage, and cold storage reports show them in excellent condition—no breakdown whatever, thus allowing me to hold them for better prices while the riper common Delicious must be moved to market regardless of prices.”

MARION K. AYRES.

The last paragraph should convince anyone to plant RICHARED if there were no other advantages.

Mr. A. Z. Wells, Wenatchee, Washington, merchant and owner of 130 acre bearing orchard writes. “My preference for RICHARED Delicious is emphasized not only because of a better and finer texture of apple but particularly as regards its bright red color, which will command market preference.”

In 1931 the Federated Growers sold a buyer in Tennessee some RICHARED Delicious apples. This season (1932) he wired for quotation on a carload and paid a premium of twenty cents per box of RICHARED Delicious over Delicious.”

LEWIS J. RICHARDSON.

“Through our Apple Shop we have sold all leading varieties of apples, but the RICHARED Delicious, because of its exceptional flavor, quality and color has the greatest appeal and has been one of our largest sellers and at premium prices.

RICHARED has superb quality for eating and shipping.

Very truly yours,

WENATCHEE APPLE SHOP.

For Prices see pink pages at back of catalogue.

The
NEW

BLACKJON

PAT. APP. FOR TRADE MARK REG.

Deep Red
Early Coloring

Ready To Pick With Full Color About Two Weeks Earlier Than Ordinary Jonathan
This Early-Coloring Jonathan Is Proving A Profitable Apple For The Grower.

Blackjon can be harvested beautifully colored, hard and firm, two weeks earlier than the common Jonathan. This Early Jonathan market is always STRONG.—

They can be stored to take advantage of a late market price. Common Jonathan are often ripe before they are well colored and must be rushed to market.

History of Blackjon

Blackjon is a bud sport or mutation and was discovered as a large limb on an ordinary Jonathan tree near Wenatchee.

Every year late in August, this tree, about 30 years old, presents a strange sight, with most of the apples showing only a blush on the exposed cheek, and all the inside fruit with no color, but the Blackjons all stand out fully colored; a beautiful rich red.

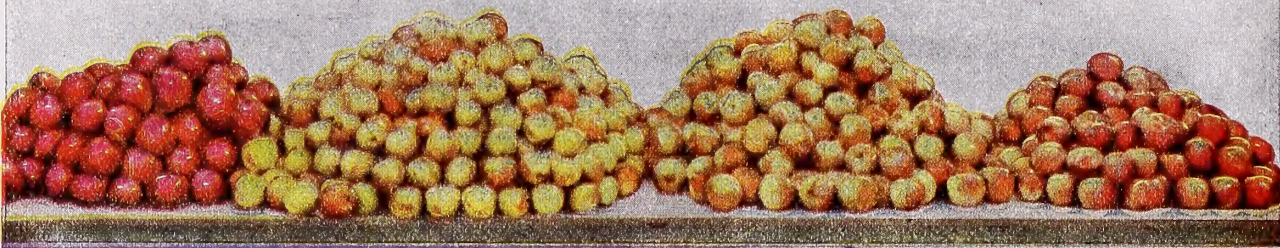


What Growers Say About BLACKJON

From Vincennes, Ind.: "From our finished picking our Jonathan and Blackjon. We find the Blackjon run about 50% better color than Jonathan, being a dark red all over; consider it far superior to Jonathan. They can go on the market 10 days ahead of Jonathan with better color."

From Santa Cruz, California: "The trees I top worked to Blackjon did exceptionally well. In the fall of 1934, I picked 18 boxes of No. 1 apples. This fall (1935) we harvested about 118 boxes from the original 25 grafted trees. I have never seen any variety of apples set so heavy. They are exceptionally good sellers. The fruit graded about 90% Extra Fancy."

A Wenatchee grower says: "Our Blackjon apples this (1935) fall were well colored right to the center of the trees. The apples, all Extra Fancy for color, were all picked with the first color-picking of the common Jonathan. The prices for first picking, which included all the Blackjons, were 50¢, over that received for the common Jonathan three weeks later."



97% Extra Fancy BLACKJON	43% C-Grade	COMMON JONATHAN	
		34% Fancy	23% Extra Fancy

The above illustration is from a photograph of a season's crop, harvested from the original parent BLACKJON tree, shows color grades of all the fruit when picked. Fruit from the original sport-limb of Blackjon was 97% EXTRA FANCY, while common Jonathan from the remainder of the tree averaged: C Grade 43%, Fancy 34%, Extra Fancy only 23%—for color—a difference of 74% in Extra Fancy Grade (more than two-thirds) in favor of Blackjon. Both crops picked some day from same tree.

Plant BLACKJON For Profit

Growers and dealers agree that early marketed Jonathans are more profitable.

BLACKJON A PROVED STRAIN

Before offering trees for sale we conducted extensive experiments, tests and check-up of the Blackjon through successive generations. Blackjon reproduces true to the original parent bud sport limb.

Planters are thus assured that the early coloring feature, and the deep bright-red color of the parent of this remarkable variety are retained when propagated.

PLANT GENUINE BLACKJON.

10 REASONS FOR PLANTING



1. Very Early Color
2. Nearly all color Extra Fancy grade
3. Better Quality at Picking Time
4. Better Keeping Quality
5. Better Shipping Quality

6. Eliminate "C" Grade
7. More Saleable Fruit Per Acre
8. HIGHER PRICES
9. Excellent Pollenizer for Other Varieties
10. Less loss from Windfalls due to early picking

For Prices see pink pages at back of catalogue.

A P P L E S

All fruit trees listed in order of ripening. Varieties marked with an asterisk (*), do well west of the Cascade mountains.

SUMMER VARIETIES

- ***Live!and Raspberry**—Pink bluch striped, white flesh.
- ***Crimson Beauty**—Very best of all early apples. Ripens week earlier than Yellow Transparent—has sold for double the price—FRUIT flaming red, good quality, good size. TREE very hardy, vigorous, bears young, produces heavy annual crop.
- ***Yellow Transparent**—Medium, clear pale yellow, waxen, tart, unexcelled for apple sauce.
- ***Early Harvest**—Medium, pale yellow, fine flavor, good for dessert and cooking.
- ***Red Astrachan**—Large, deep crimson, acid, juicy.
- Red June (Wilson's)**—Medium, brilliant red, tart and juicy.

FALL VARIETIES

- ***Duchess (of Oldenberg)**—Large, attractive yellow with red stripes, juicy and sweet.
- ***Red Duchess**—Bud sport of Duchess, dark red, more color than Duchess, stands up well when baked.
- Jeffries**—Medium, striped, sweet, juicy.
- ***Red Gravenstein**—Large, bright red, excellent quality, originated on Orcas Island, Puget Sound, Washington.
- ***Wealthy**—Large, bright red, tart, very good.
- ***Wolf River**—Very large, rich red, sub-acid, good quality.
- ***Wagner**—Medium, deep red, high flavor, juicy.
- Snow (Fameuse)**—Medium to small, deep red striped, tart, good dessert.

WINTER VARIETIES

- ***Winter Eanana**—Large, clear waxy yellow with blush, tart flavor, good cooking.
- ***Yellow Bellflower**—Very large, yellow with blush, tart, juicy.
- Grimes Golden**—Medium, rich golden yellow, crisp, fine flavor.
- King David**—Medium, wine red, good flavor.
- ***McIntosh Red**—Large, bright red, striped, white flesh, excellent, very aromatic, dessert and cooking. Good pollinizer for Richared, Shotwell and common Delicious.
- ***Blackmack (T. M. Reg.)**—Sport of McIntosh Red and a more profitable variety. See page 9 for full description.
- Jonathan**—Medium, red striped, rich flavor, unexcelled for pie, good dessert.
- Blackjon (T. M. Reg.)**—A bud Sport or mutation of Jonathan,

earlier and more color, deep red. See page 4 for full description.

- Delicious (Red or Common)**—Large, red, striped, excellent flavor, fragrant aroma, fine eating, best for salads.
- Richared (T. M. Reg.) Delicious**—Probably the best known bud sport or mutation of the Delicious. For color-illustrated description see page 3.
- ***Shotwell Delicious (U. S. Plant Pat. No. 99)**—Another improved Delicious; colors earlier and darker than Richared. See page 6 for description.
- ***Rhode Island Greening**—Large greenish yellow, juicy, excellent.
- Spokane Beauty**—Largest apple grown.
- ***Baldwin**—Large, deep red, tart, juicy. Commercial apple of East.
- ***Northern Spy**—Large, yellow striped with red, rich and juicy. Old favorite in north and New England.
- Golden Russet**—Medium, dull russet, juicy and highly flavored.
- ***King**—Very large, yellow, splashed with crimson, excellent dessert, good baker.
- Rome Beauty**—Large, yellow, striped with red, fine, juicy, unexcelled for baking.
- SeeandO (T. M. Reg.) Red Rome**—Darker color than Rome Beauty. Nearly all Extra Fancy grade. See page 6 for description.
- Chelan**—Large, wonderful golden winter apple, excellent dessert and cooking, long keeper.
- Spitzenberg**—Medium to large, deep red, excellent flavor, an old favorite.
- White Winter Pearmain**—Large, pale yellow, fine flavor.
- Newtown—Pipp'n (Yellow Newtown)**—Medium to large, light yellow, excellent for both dessert and cooking.
- Arkansas Black**—Large, dark red, long keeper.
- Stayman Winesap**—Large, striped and splashed with dark crimson, splendid quality, heavy bearer.
- Blaxtayman (T. M. Reg.)**—New all-red Stayman Winesap. See page 7 for description.
- Mammoth Black Tw'g**—Large, dull green or deep yellow, overspread with red, good quality, excellent keeper.
- Winesap (Common)**—Medium, dark red, good keeper and producer.
- SeeandO (T. M. Reg.) Winesap**—An improved all-red Winesap. For description see page 9.
- Black Ben**—Large, deep red, productive.

A
Field
Of
"C. & O."
One Year
APPLE TREES
Ready
To Dig



It Requires
Careful
Growing
To Produce
Trees
Like These

COMBINATION VARIETIES APPLE TREES

We offer novelty apple trees with from three to five different varieties budded or grafted on as many different branches. These ripen from summer to late fall—all dependable, high grade varieties. For varieties, see page 30.

Home owners and tree lovers will find these "Combination" trees, containing several varieties on one single tree, a never ending source of interest and delight. For the home owner one of these trees puts a whole "home orchard" on the ground occupied by a single tree. Imagine beautiful red, yellow and other brilliant colored apples—all on one tree!

These are large, well branched trees. When planting the only pruning you will need to do is to cut back the branches about one-half and shorten any roots that are too long.

CRABAPPLES

Crabapples should be planted for beauty of tree, and for the value of the fruit. They are delicious for cooking, preserving and jellies.

- ***Transcendent**—Large, red and yellow striped, good eating and cooking.
- ***Hyslop**—Large, dark red, or purplish, good keeper.
- ***Red Siberian**—Small, good cropper, red.
- ***Whitney No. 29**—Large, glossy, striped with carmine, juicy pleasant flavor.



THE EARLIEST-COLORING,
"SOLID-RED" DELICIOUS

A Different Solid-Red Delicious

The SHOTWELL differs from the RICHARED in that it colors earlier and darker. We especially recommend "SHOTWELL" for districts where it is hard or impossible to get average color with the common Delicious. We also recommend SHOTWELL for districts where very early color is a sales factor. Whereas the Richared Delicious colors a bright "cherry" red, the SHOTWELL colors a darker red.

It is an exclusive C. & O. introduction and the United States Government granted U. S. Plant Patent No. 90 on it, It is a "Bud Sport" or mutation of the Delicious. The original tree has one main limb—on which the apples color much earlier and darker than the Delicious on the balance of the tree and on all adjoining trees. It has been thoroughly tested.

The Richared Delicious starts coloring with a blush-all-over-red, no stripes, while the Shotwell starts coloring with stripes

which are scarcely visible in the highly colored finished apple although occasionally traces of striping can be seen.

The following letter is from the manager of one of the Wenatchee valley's (Washington) largest orchards.

"In the spring of 1928 I purchased from your Company, and planted 160 Shotwell Delicious trees. This year, 1934, the trees are well loaded, and today (August 28th) the apples will grade nearly 100% extra fancy for red color, whereas, but very few, if any of our ordinary red Delicious apples have attained sufficient red color to grade extra fancy.

"We will pick our Shotwell Delicious at once, but will wait as long as possible to pick the ordinary red Delicious, hoping that they will take on more color.

I Remain Yours Very Truly,
C. A. LEEDY."

In the year 1935, Mr. Leedy sold his Shotwell Delicious for about 40 per cent more than for ordinary Delicious.



Above picture shows actual color at picking time from original "Shotwell" tree

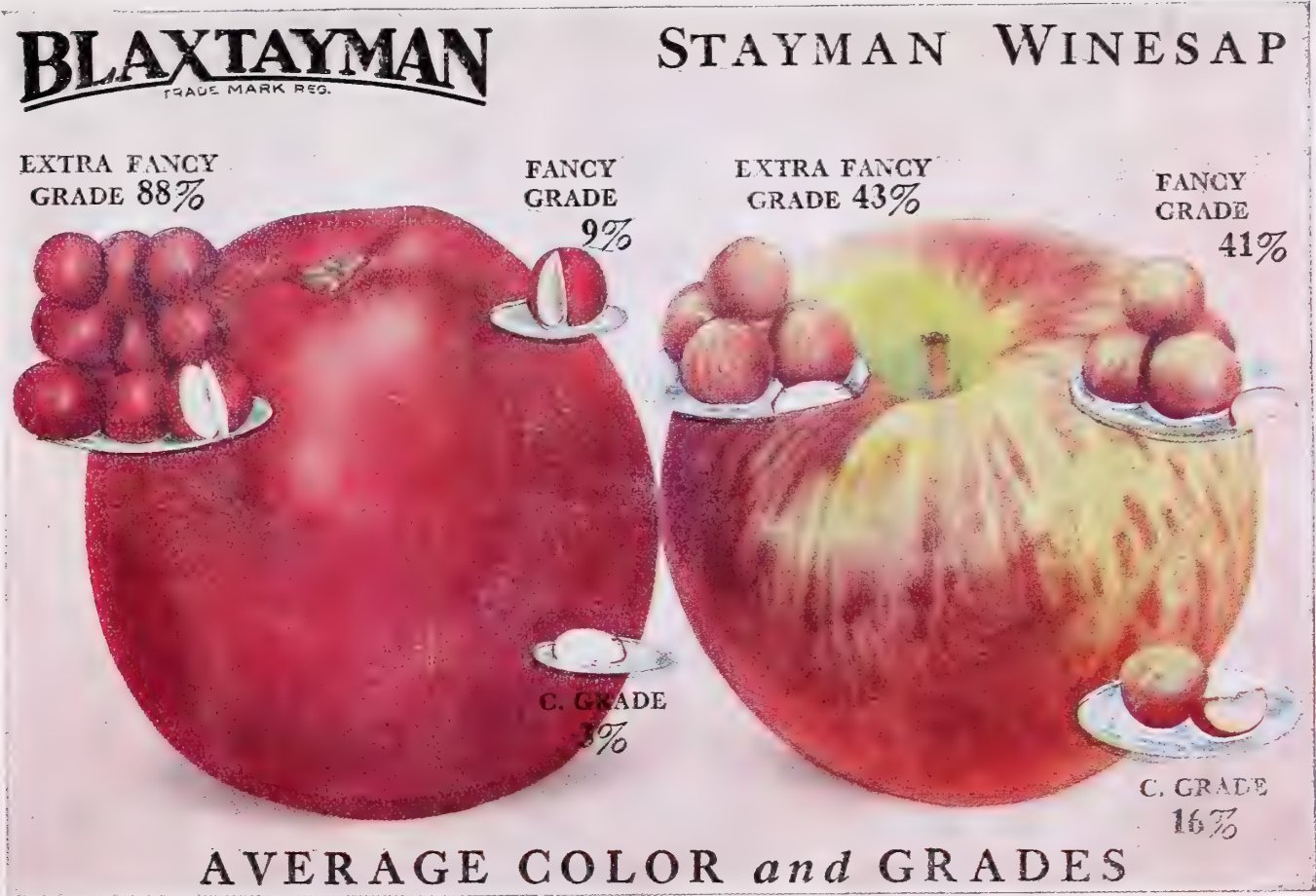
"See And O" RED ROME---AN EARLY
COLORING ROME BEAUTY

A beautiful ALL-RED apple, possessing all the fine qualities of the old Rome Beauty, but coloring earlier, and practically all 100% Extra Fancy grade. While Rome Beauty has always been recognized for its regular and heavy crops, a large percentage of the fruit has gone into the lower grades because of the lack of red color. The SEEANDO Red Rome overcomes this objection with its high color, and like-wise high percentage of Extra Fancy grade.

SEEANDO (Trade Mark Reg.) RED ROME, like the famous RICHARED Delicious, BLACKJON, BLAXTAYMAN, and other bright red apples in our "NEW RACE OF RED APPLES," originated as a bud sport or mutation of the common Rome Beauty.

The value of its attractive, brilliant red color was quickly recognized and appreciated. In new orchard plantings SEEANDO RED ROME is taking the place of the ordinary Rome Beauty.

Growers have found the Rome Beauty valuable as a "filler" in apple orchards, since the tree is a compact grower and bears very early. SEEANDO RED ROME is ideal for this purpose, since it embodies all the features of the ordinary Rome Beauty in respect to habit of growth and quality of fruit—besides a DEEP, BRIGHT-RED color that adds greatly to its market value. It is an excellent pollenizer for both Delicious and Winesap, which purpose it is frequently planted.



COLOR GRADES AT PICKING TIME

BLAXTAYMAN	Ex. Fey. 88%	Fancy 9%	"C" Grade 3%
Common Stayman	Ex. Fey. 43%	Fancy 41%	"C" Grade 16%

Every apple grower knows that it is the "Extra Fancy" Grade which pays the profit. The above illustration and comparative figures tell a convincing story of the advantage held by the BLAXTAYMAN over the common Stayman — a little over 100% more Extra Fancy in favor of BLAXTAYMAN.

BLAXTAYMAN is a BRIGHT, RICHER and DEEPER RED than the ordinary Stayman. A sparkling live color that appeals to the buyer. It colors earlier than the Stayman and without stripes—it does not have the muddy, greenish color of the ordinary Stayman.

BLAXTAYMAN is a bud sport or mutation of the ordinary Stayman. The original tree was discovered several years ago in an orchard near Lake Chelan, Wash. BLAXTAYMAN has been carefully and thoroughly tested. Young trees, and top-grafted trees are bearing and producing the same beautiful all over, solid-red apples as the original parent tree.

BLAXTAYMAN can be picked earlier than common Stayman, lessening danger of loss from windfalls—a serious trouble with ordinary Stayman. It has a tougher skin and therefore less cracking of the fruit on the trees.

BLAXTAYMAN keeps much better in cold storage and is less subject to scald.

See our Free Stock offer in price sheets.

For Prices see pink pages at back of catalogue.

RILAND SELLS FOR OVER 50 PER CENT MORE THAN OTHER APRICOTS ON AUCTION

"On July 12 we shipped a car of mixed fruit to Detroit, Michigan, and in this car were some Riland Apricots furnished and packed by ourselves.

The car was sold on the Detroit auction and the Wenatchee Moorpark in the car sold at \$1.10 to \$1.25, and your Riland Apricots sold for \$1.95. This was about seventy-five cents per crate higher than the regular Wenatchee Moorpark Apricots."

Wenatchee Produce Company,
By CONRAD ROSE (President)

NOTE: 1000 crates per acre are less than an average crop, and at 75 cents more per crate the extra money would be at least \$750.00; all of which is added pro fit.

RILAND

U.S. PLANT PAT. #74

The EARLIEST Good
APRICOT Large Size,
Attractive
Appearance, Excellent Flavor and
Good Shipper



Actual color reproduction (photo) showing branch of Riland Apricot

Average size: Larger than Tilton

DESCRIPTION

RIPENING PERIOD

Earliest commercial variety.

APPEARANCE

A beautiful flame red shading to orange. Very attractive.

SIZE

Larger than Blenheim, Tilton or Moorpark.

SHAPE

Globular—Easy to pack.

FLESH

Apricot yellow—Firm Texture. Small pit.

BEARING QUALITIES

Heavy Cropper.

GROWING QUALITIES

Tree vigorous and hardy.

SHIPPING QUALITIES

Excellent, as it ripens evenly and is firm.

FROM EMMETT, IDAHO: "We picked the RILAND Apricots July 22nd. The fruit was finely colored a long time before it was ready to pick. The color, uniformity in size, and keeping quality makes the RILAND a good shipping and selling cot."

— TELEGRAM —

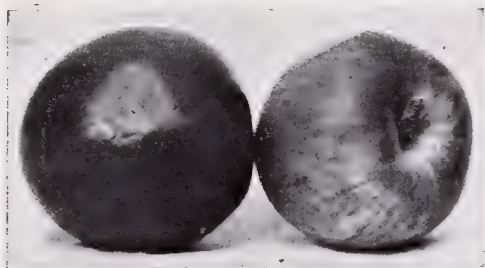
YOUR RILAND APRICOTS SOLD ON CHICAGO AUCTION AT WONDERFUL PRICES AND THIRTY EIGHT CENTS PER CRATE MORE THAN WENATCHEE MOORPARKS IN SAME CAR STOP FRUIT ARRIVED IN EXCELLENT CONDITION AND IS VERY ATTRACTIVE STOP I RECOMMEND ITS PRODUCTION IN PREFERENCE TO ALL OTHER VARIETIES IN THE STATE OF WASHINGTON.

J. B. ADAMS,

(President Independent Fruit Shippers)

For Prices see pink pages at back of catalogue.

TWO MORE EARLY-COLORING RED APPLES



SEEANDO WINESAP ORDINARY WINESAP

"SeeAndO" Winesap

**AN EARLY-COLORING
SOLID-RED WINESAP**

This new strain of Winesap has a much darker, also richer and more brilliant red color than common Winesap. It has no stripes, colors earlier, and nearly all apples color Extra Fancy grade—only a few Fancy, and practically no C grade. An actual check of seventeen hundred and seventy-five (1775) apples picked from one tree graded for color—94.1 per cent Extra Fancy; 5.2 per cent Fancy and less than 1 per cent "C" grade.

The SEEANDO Winesap is a bud sport or mutation of the common Winesap, and is identical with the Winesap in respect to quality, productiveness, flavor and in every respect except the dark, rich, all-over-red color as above mentioned. The tree, leaf, bark, productiveness and long-keeping qualities are the same; but SEEANDO WINESAP is a more perfect, more highly colored Winesap and because of darker and earlier color, and a much greater percentage of Extra Fancy grade for color, it makes more money for the grower.

The SEEANDO WINESAP was discovered in the Wenatchee Valley, Washington. It was brought to our attention by Mr. W. A. Luce, formerly Horticultural and Soils Investigator for Chelan County, and the State College of Washington, and later Orchard Adviser for the Earl Fruit Company. This remarkable new variety has been thoroughly investigated and tested in our own proving grounds. There are thousands of young trees bearing in the Wenatchee, Washington, district.

Mr. Leo C. Antles, Production Manager for the American Fruit Growers, Inc., Wenatchee, Wash., has given SeeandO Winesap his endorsement, and has planted trees in his own large orchard along with several thousand Richared Delicious. In an address before a meeting of the Washington State Horticultural Association, Mr. Antles expressed the opinion that under North Central Washington orchard conditions, SeeandO Winesap would show an estimated earning of \$280.00 per acre—against \$210.00 for common Winesap—or an increased earning of 33% to the grower. This large increased profit Mr. Antles estimated would result through SEEANDO WINESAP COLORING 85% EXTRA FANCY as against 55% Extra Fancy with ordinary Winesap.

Genuine SEEANDO WINESAP trees are obtainable only from our nursery and sold under the trade marked name "SEEANDO (Trade Mark Reg.) WINESAP," which is assurance to our customers of genuine stock of this remarkable new strain.

"Your stock is all good and this is the third year that I have ordered from you; they all have fine roots."—Spokane, Wash.

BLACKMACK
TRADE MARK

A Great New All-Red
Early-Coloring
McINTOSH

A very great improvement over the ordinary McIntosh Red. At picking time in most districts it is difficult to obtain sufficient color on the McIntosh to get more than a small percentage in the Extra Fancy Grade. If they are left to color, they either get too mealy or may drop with the first wind-storm. This objection is overcome with BLACKMACK. Due to its earlier color and more of it, it can be picked and marketed while the McIntosh are still hanging on the trees uncolored. In every other respect the BLACKMACK is a true McIntosh—same size, shape, flavor; but due to earlier picking, a firmer better colored, more saleable apple. The BLACKMACK originated in British Columbia, Canada, and after careful tests was introduced to the fruit world by our company. The following letters tell the story better than we can.

On August 25th, 1931, I inspected an orchard near Oliver, British Columbia, Canada. I found two different kinds of McIntosh growing there. One was a new type, deep, full colored, ALL-red McIntosh that was ready to pick. Nearly every apple on these trees had sufficient color to go into Extra Fancy grade. On the ordinary McIntosh trees in adjoining rows, the apples were still green and probably not ten per cent had enough color to grade Extra Fancy. I could observe no difference in size, flavor, or texture of the two apples, but difference in color was remarkable.

At the time we usually pick McIntosh many of them are so ripe that they drop easily—many windfalls is the result. BLACKMACK should overcome this fault as they have to be pulled off the trees at picking time. Another advantage in earlier picking is that usually early marketed McIntosh bring a premium in price over later-picked ones. Still another advantage is, by picking early, you have an apple that is hard ripe when picked, and will keep much better in cold storage.

Probably the most important difference of all is that the percentage of Extra Fancy would be so very much greater with BLACKMACK than with McIntosh.

OLIVER CO-OP. GROWERS,
By J. Linton.

I want to assure you that I am highly pleased with the "Blackmack" on my orchard at Leavenworth. On my 30 acre young orchard I had quite a scattering of apples this past season. My trees will be four years old next spring. The "Blackmack" were beautiful in color and practically all extra fancy. They were far superior to the old McIntosh.

My Blackmack were hanging tight on my young trees this year when I picked them. They were almost solid color while the old type McIntosh were only partially colored and striped.

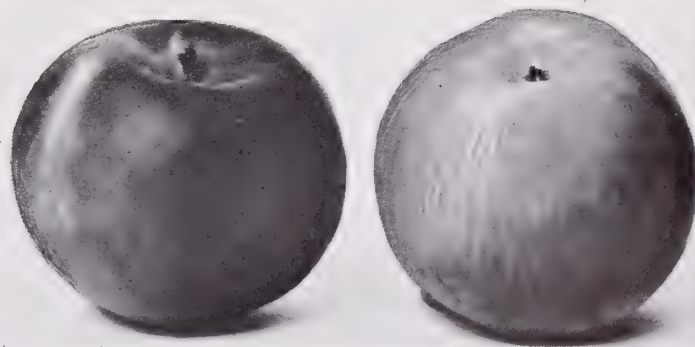
With my experience so far with McIntosh, I can strongly encourage the planting of the Blackmack. Commercially, they are far superior to the Jonathans in late districts, and are excellent for a pollinizer for the Delicious. They bloom just right to fertilize the king blossom of the Delicious cluster.

ROY LARSEN

Mr. Richard Simpson of British Columbia, a grower of both Blackmack and ordinary McIntosh, writes:

"On August 25th, I picked Blackmack apples for a special order. These apples averaged 90% Extra Fancy and 10% Fancy. On the same date the color of common McIntosh was only about 10% Extra Fancy, 20% Fancy and 70% C Grade. The common McIntosh were growing right along side the Blackmack trees. The price for the Blackmack was considerably higher as they were in the early pool. Over the three year period that the Blackmack trees have been in bearing, I have picked 80% and over Extra Fancy for color from August 25th to 30th."

Wherever McIntosh Can Be Grown BLACKMACK Is Preferred



BLACKMACK

McINTOSH

Blackmack is identical with McIntosh in flavor, shape, size and productiveness—but produces over 45% more extra fancy grade for color.

Varieties marked with an asterisk (*) do well west of the Cascade mountains in Washington and Oregon.

PEARS

The pear very justly ranks as one of the most delicious of fruits, by reason of its fine, juicy texture and exquisite flavor and aroma.

The soil most congenial to this fruit is a strong clay loam, but it will succeed in any good soil, provided it is moderately rich.

Pears are listed in their order of ripening.

- ***Sugar**—Small, light yellow, sweet, good.
- ***Clapp's Favorite**—Large, resembling Bartlett, excellent flavor, sweet. Desirable for home orchard.
- ***Bartlett**—Large, clear yellow, sometimes slightly blushed, occasionally flecked with russet. Juicy, buttery, dessert, cooking and canning.
- ***Flemish Beauty**—Large, green to yellow, red cheeked, juicy, rich, very productive.
- ***Beurre D'Anjou** ("Anjou")—A firm pear, rather large, flesh yellowish white, rich buttery flavor, good keeper. One of the leading commercial pears.
- ***Doyenne Du Comice**—Large, yellowish red, rich and juicy.
- ***Seckel**—Small, brownish green, red cheek, sweet, juicy, excellent.
- ***Beurre Boss**—Large, cinnamon russet, long neck, juicy, delicious flavor.
- ***Kieffer**—Large, golden yellow, hardy, blight resistant. Vigorous and fruitful.
- ***Beurre Eas'er**—Large, yellow with red cheek, juicy and sweet.
- ***Winter Nellis**—Medium size, yellow covered with russet, very fine, good producer.
- ***Winter Bartlett**—Large, resembles Bartlett.
- ***Old Home**—Blight resistant; good for top working to other varieties.

PEACHES

Varieties listed in order of ripening.

"F" denotes freestone; "C" clingstone; "S. C." semi-cling.

- ***May Flower, S. C.**—Earliest of all peaches, medium, red, white flesh.
- ***Early Wheeler (Red Bird Cling) C**—One of the best early market peaches. Fruit large, bright red on background of creamy white. An excellent shipper.
- ***Alexander, C.**—Medium size, greenish white with red blush.
- Hale's Early, S. C.**—Medium, greenish white with red cheek. Good quality.
- ***Golden Jubilee, F.**—The earliest good freestone. A real commercial money maker. See page 14 for description.
- ***Triumph, F.**—Large, dark orange yellow.
- Arp. Beauty, F.**—Large, yellow with blush—delicious.
- ***Rochester, F.**—Very hardy, thrifty grower. Medium size, deep yellow and red, excellent quality. Especially good west of the Cascade mountains.
- Vedette, F.**—A seedling of Elberta but more globular and more color. Comes into bearing early and is productive. Season with last of Rochester.
- Foster, F.**—Large, creamy with red cheek. Very hardy.
- Valiant, F.**—Resembles Elberta but more globular in shape and of better quality. Considered best canner in Ontario, Canada. Season just after Vedette.

Slappy, F.—Large, deep yellow—excellent home canner.

Early Crawford, F.—Large, yellow—good quality. A good home garden peach.

***Champion, F.**—White-fleshed peach. Firm, sweet, delicious flavor. Tree hardy, and good bearer.

South Haven, F.—Early, yellow, good color, good shipper. Tree prolific bearer, extreme'y hardy.

Hale Haven, F.—More color than South Haven and more free at pit. Thicker skin. Season same. Not quite as hardy as South Haven.

Veteran, F.—Elberta type peach. Tree vigorous grower and early production. Season just after Valiant.

Redelberta (U. S. Plant Pat. No. 232) F.—A bud sport of the Elberta and a true Elberta in all respects except that it matures about 10 days earlier and has double the red color.

Early Elberta, F.—Large, golden yellow—excellent quality, good shipper.

Tuscan Cling, C.—Very large, earliest cling, commercial canner. **Heath Cling, C.**—A most delicious cling. Very large—creamy white with faint blush, juicy, sweet, good canner.

Elberta, F.—Very large, bright yellow—good shipper.

J. H. Hale, F.—Very large, golden yellow—fine shipper. The commercial peach by which all other peaches are measured for standards of excellency.

Candoka (U. S. Plant Pat. No. 51) F.—The "fuzzless" peach. **Muir, F.**—Large, deep yellow—very firm, best for drying.

Late Crawford, F.—Very large, yellow with dark red cheek.

Indian Blood, C.—Large, red, ideal for pickling and preserving.

Lemon Cling, C.—Large, lemon color—one of the best market varieties, excellent quality.

Grange Cling, C.—Large, yellow, rich, sugary, vinous flavor. Heavy bearer.

Phillips Cling, C.—Large, yellow, small pit, fine commercial canner.

Simmons, F.—Large, firm, good late variety.

Miller Cling, C.—Large, good flavor, excellent for home canning.

Rio Oro Gem, F. (U. S. Plant Pat. No. 89)—Best late variety.

Salway, F.—Large, yellow with red cheek, excellent late peach.

APRICOTS

Riland (U. S. Plant Pat. No. 74)—The only "patented" apricot—discovered and introduced by "C. & O." The earliest commercial apricot. For color-illustration and full description see page 8.

Gilbert—Medium size; very early—good quality.

Yakimene (Acme)—A Japanese apricot. Large, early, handsome, distinctive flavor. Excellent dessert.

Wenatches—Very large—leading apricot of Wenatchee valley, Washington. Very productive—a dessert apricot. (Formerly called Wenatchee Moorpark)

Peach—Large, deep orange—highly flavored.

Royal—Medium size—dull yellow with orange cheek—good canner and dryer.

Blenheim—Medium size, oval, deep yellow. Good canner—productive—excellent quality.

Tilton—Larger than Blenheim, oval—fine flavor. Considered one of the best commercial canners.

Moorpark—Large, but not as large as Wenatchee—deep yellow blushed with red. A standard variety—good canner.

***J. L. Budd**—A small Russian apricot—very hardy, will grow where other apricots fail. Delicious kernel.



Inspecting

A

Field

Of

"C. & O"

Peach

Trees

Pollination of Candoka Peach - J. H. Hale Peach - Riland Apricot

Our pollination tests on the blossoms of the Candoka Peach and the Riland Apricot are, as yet, incomplete; so as a matter of Insurance, we recommend an interplanting of about ten per cent of some other variety. With **CANDOKA**, any other variety (except J. H. Hale) listed in our catalogue. The Slappy, Early Elberta, Rochester, and Elberta have proven to be exceptionally good. This applies to **J. H. HALE**. The Candoka and J. H. Hale do not inter-pollenize. For the **RILAND** Apricot, any other variety (except the Yakimene) listed in our catalogue will do.

CHERRIES

CHERRY POLLENIZATION

It is no longer a theory, but a recognized fact, that sweet cherries, especially Bing, Lambert, and Royal Ann require pollenization from other varieties. Plant every ninth tree—(every third tree in every third row)—with some such variety as Black Tartarian, Black Republican, Waterhouse, Governor Wood, Centennial or Deacon. Proper pollenization has been known to double production.

While most of these pollenizing varieties have little commercial value, our "certified" Deacon, which closely resembles the Bing, is in good market demand.

Extensive research work has been conducted by Messrs. F. L. Overley and E. L. Overholser of the State College of Washington, to determine the relative effectiveness of various cherry varieties for pollenization purposes. Strains of certain varieties have been found more effective and efficient as pollenizers.

Experiments proved that not all cherry trees, even though of a pollenizing variety are dependable as pollenizers—but that some certain trees showed exceptional pollenization qualities.

We have given special attention to cherry pollenizers and have closely observed the results obtained in the experimental work referred to. All our cherry pollenizers are propagated direct from certified trees that were found, during the experiments referred to, to be the best strains of pollenizers available.



BING CHERRY (One-half Normal Size)

SWEET VARIETIES

- Early Purple**—Small to medium, purple, juicy and sweet.
Black Tartarian—Large, purplish black, juicy and rich, certified pollenizer.
Governor Wood—Yellow, certified pollenizer.
Royal Ann—Large, pale yellow with red cheek, firm, juicy and sweet. In demand by canneries.
Centennial—Large, yellow, certified pollenizer.
Long Stem Waterhouse—Medium; resembles Royal Ann; certified pollenizer.
Deacon—Black, resembles Bing, not quite as large, very resistant to cracking. Certified pollenizer.
Bing—Large, black, fine flavor, good shipper.
Black Republican—Large, shining black, good keeper and shipper, certified pollenizer.
Lambert—Large, dark purplish black, sweet, rich, fine flavor.

DUKES AND MORELLOS (Sour)

- Early Richmond**—Medium size, dark red, acid.
May Duke—Large, red, juicy and rich.
Montmorency—Large, red, "the kind the canneries want."
Late Duke—Large, light red, late and fine.
English Morello—Large, dark red, rich, juicy, acid, good canner.

COMBINATION VARIETIES CHERRY TREES

We have several combinations of varieties with from two to four varieties on one tree. These are very desirable for home garden planting. The cherry also make an excellent shade tree. You will be delighted with these novelty trees.

For varieties see pink pages.

NECTARINES

The tree of the Nectarine to all appearances can be called a peach tree. In growth, habit, and soils required it is similar to the peach. The fruit differs from the peach in that the skin is

smooth, and the rich, aromatic flesh has a flavor all its own. The Nectarine is an exceedingly delicious dessert fruit.

Boston Red—Large size—deep yellow with bright blush—sweet.
Quetta—Large—yellow green—rich, delightful aroma—excellent quality.

PLUMS

Many of the varieties are excellent dessert fruits, of rich and luscious flavor; for cooking and canning they are unsurpassed. The trees of most varieties are hardy.

Plums, like all fruit trees, should be kept well cultivated for several years after planting.

*—Varieties that do well west of the Cascade mountains.

- Climax**—Very large, heart-shaped, deep red, good shipper.
Shiro (Early Gold)—Very early, large, golden yellow, good.
***Yellow Egg**—Large, egg shaped, yellow, good canner.
Burbank—Large, cherry red, mottled with yellow, sweet, good shipper.
Maynard—Very large nearly round, dull red, sweet.
Santa Rosa—One of the largest, most beautiful, of all cling plums. Dark crimson, almost round, excellent shipper.
***Bradshaw**—Large, dark red, flesh green, fine.
Simoni—Shape and color like tomato.
***Yakima**—Very large, egg shaped, red, good shipper.
***Peach Plum**—Very large, roundish, purple. Excellent for eating fresh.
***Damson**—Small, roundish oval, dark purple, fine canner.
***Imperial Gage**—Small, round, greenish yellow, good canner.
Wickson—Large, dark red, sugary, fine shipper.
Satsuma—Large, nearly round, dark red flesh, small pit.
***Compass Cherry-Plum**—Very hardy, bears young, often second year. Fruit is nearly inch in diameter, bright red; sweet, juicy and fine flavor.

PRUNES

Since prunes carry a much higher percentage of sugar than plums they dry without removal of pits. Also there is nothing more delicious than prunes canned with pits in. The prune is a beautiful fruit, excellent for eating fresh, and valuable for all home uses, in addition to their value as a commercial drier. The yield of all varieties will be materially increased if several kinds are interplanted for cross pollination.

*—Varieties that do well west of the Cascade mountains.

- *Early Italian**—Resembles Italian, slightly larger and sweeter. Two weeks earlier. Good commercial variety.
***Tragedy**—The best early prune, a favorite, high quality, dark purple with yellowish-green flesh, firm, sweet, and highly flavored. Requires cross pollination.
***Sugar**—Very large, oval, dark purple, tender, sweet; particularly fine for home drying and canning. Contains almost 24 per cent sugar.
***Hungarian**—Very large, dark red, juicy and sweet. Its bright color, productiveness, and shipping qualities make it profitable for home or market.
***Petite (French)**—Medium size, egg shaped, purple, very sweet and fine.
***Double X French**—Larger than Petite.
***Silver**—Large and handsome, oval shape, light yellow skin, flesh firm, rich and sweet. Very heavy bearer.
***Italian**—Medium size, oval tapering at both ends; dark purple flesh greenish yellow; separates freely from pit; excellent for eating fresh, and the best for drying.

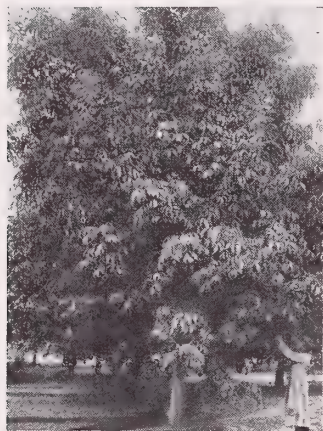
QUINCES

The Quince grows best in good, deep soil, and on such will quickly yield an abundance of fruit. The flesh becoming a beautiful dark red when cooked. The Quince is unexcelled for jelly and preserves.

- Champion**—Large, flesh cooks very tender.
Orange—Large, roundish, bright yellow, an old favorite, finest quality.
Pineapple—Very large, apple shaped, flavor resembles pineapple, delightfully fragrant when fresh and delicious when cooked.

FOR PROFIT --- PLANT NUTS

ENGLISH WALNUTS CAN BE SUCCESSFULLY GROWN IN EASTERN WASHINGTON



English Walnut
Seeando English Walnut—very
hardy, heavy bearer

Scattered throughout the fruit districts of central eastern Washington are to be found many fine, large English walnut trees, which regularly yield large crops of nuts of large size and excellent quality.

On the west shore of Lake Chelan, Washington, are several hundred old bearing trees which have yielded many tons of excellent nuts. Near Orondo, Washington, is a grove of 150 trees many of which are over forty years old. They produce annually several tons of nuts which sell at from 25c to 35c per pound.

We have found one tree in the Wenatchee Valley which we believe is a real discovery. At this time (1936) it is 42 years old, has never suffered any serious winter injury, and regularly produces good crops of very large, well shaped, thin shelled, plump kernelled nuts of good quality. Samples may be seen at our office. We have named this one particular tree the **SEEANDO (Trade Mark) English Walnut**, and recommend that trees be planted in suitable localities.

* * *

English Walnut trees are propagated by grafting and from seed. The grafted tree is harder to grow and commands a higher price. An excellent nut is produced from selected seed from grafted trees. The seeds we plant are from choice Oregon nuts.

Franquette Walnut—Seeds large, long, sweet, and rich; kernel full fleshed. Tree hardy, thrifty grower, good producer.

Cammack Walnut—After testing many varieties, we selected this variety as hardier and more suitable to climates where hardness is an important factor. Larger and more globular than Franquette.

BLACK WALNUTS

Besides producing a food crop, the Black Walnut is a stately shade tree. Its foliage colors a beautiful golden brown in early autumn.

Thomas—Very large, thin shelled, easily cracked. Splendid flavor, a fast upright grower, bears heavily in 5 years. Extremely hardy. Pollenizer for English Walnut.

Sabler—Medium size, excellent cracker, thin shelled, tree is a prolific bearer. Flavor excellent. Meats often come out practically whole. Early bearing. Extremely hardy. Pollenizer for English walnut.

BUTTERNUT or WHITE WALNUT

Beautiful growing tree and yields large nuts of rough, hard shell, with full white, oily kernels, sweet, rich and of delicious flavor.

PECAN

Tree adapts itself to a wide range of climatic and soil conditions. It thrives in regions with warm summers, should be well irrigated throughout the dry season, and does best in a deep sandy loam. The tree makes a splendid fast growing large shade tree.

FILBERTS

Western Washington and Western Oregon are localities especially adapted to the growing of Filberts in a commercial way. A crop failure in these localities has seldom occurred.

Prof. Schuster, nut expert at the Oregon Agricultural College, says:

"The Pacific Northwest is the only place in the United States where Filberts are grown commercially to any extent. Here the Filbert thrives. . . . The large, fresh nuts of the Pacific Northwest are much superior to the imported stock, as the imported stock is nearly a year old when received and of inferior quality."

The Filbert is less particular to the location and soil than many other nut and fruit trees. It does well on any soil that is fertile, well drained, retentive of moisture during summer, and which has sufficient depth.

Filberts are generally planted 25 feet apart, each way. This requires 70 trees to the acre **POLLENIZER** should contact each tree. In commercial plantings, pollenizers are planted every third tree in every third row.

Varieties

Barcelona—A large round nut that drops freely from its husk.

The self-hurking feature is a valuable one. Makes a large tree and bears early. Proper pollination is essential. DuChilly, Daviana, and White Aveline are all good pollenizers for Barcelona.

DuChilly—A leading commercial variety, very popular in Western Washington. Very large, long nut of superior quality. In some markets commands premium price over Barcelona. Trees not so large as Barcelona, but a good bearer.

Daviana—This is a handsome nut of the DuChilly or long type. The trees are large, handsome, and of upright growth. Excellent pollenizer for both DuChilly and Barcelona.

White Aveline—Mostly planted as a pollenizer for Barcelona, and for home use. Barcelona also pollenizes White Aveline, so they are to be recommended for interplantings.

ALMONDS

Two or more varieties of Almonds must be planted together in the right combinations, to secure successful pollination. Good combinations are—Nonpareil and Texas Prolific; Nonpareil and I. X. L.

Varieties

Nonpareil—Large, smooth, plump kernel, thin shell.

I. X. L.—Medium, elongated, soft shelled nuts.

Texas Prolific—Small, soft shelled, plump nuts. Late bloomer and good pollenizer for Nonpareil.

HICKORY

"The nut nearest to the heart of the American people" is now successfully grown in all sections of the U. S. Soil should be rich, deep, and thoroughly drained. Tree slow growing.

CHESTNUT

American Sweet—Fruit very sweet and of fine flavor, rather small but prolific and profitable. Hardy.

Spanish or Italian—A handsome, round-headed tree, producing abundantly very large nuts. Not quite as sweet as American.

CANDOKA

U.S. PLANT PAT. # 51

THE "FUZZLESS" PEACH
A BLAZE OF GLORIOUS COLOR

THE FINEST
PEACH IN
THE WORLD

It Has Created A
Sensation Where-
ever Shown

A Small Shipment of Fruit to
Oklahoma Brought a Telegram
Asking for a Carload.



DESCRIPTION

Color - Deep yellow or flaming red, this brilliant color is very striking.

Skin - Nearly as smooth as a nectarine; it has been described as "Fuzzless";

Size - Very large; about the same as J. H. Hale;

Flavor - Excellent sweet and pleasing, similar to J. H. Hale but better

Yellow Free-stone - Exceptionally firm almost as solid as a clingstone. It can be left on the tree until almost tree ripe before picking for shipment.

Shipping qualities - The best we have observed in any free stone peach; excellent canner.

Ripening Season - About the same as J. H. Hale.

Candoka Endorsement

Comes From Coast To Coast

FROM SPOKANE, WASH.

"Received the CANDOKA peaches and they are wonderful. We placed them in our window and to say that they aroused comment and praise would be putting it mild. They really are the finest peaches that I have ever seen.

FROM BERLIN HTS., Ohio:—"The CANDOKA Peaches arrived in wonderful condition and were kept for several days before eating. I think the CANDOKA deserves all credit you give it—the color, size, flavor, and firmness of flesh are simply perfect. Will plant some CANDOKA trees next spring."

FROM CEDAR RAPIDS, IOWA:

—"The box of CANDOKA peaches arrived in perfect condition, and truly, they are the most wonderful peaches I have ever seen, both in appearance, texture, and eating quality."

FROM CHELAN, WASHINGTON:

"My CANDOKA peach trees have a good crop this year of the most beautiful and highest quality peaches. Their large size, smooth skin, fine texture and most excellent flavor all combine to make them the finest quality peaches."

FROM EMMETT, IDAHO:

—"I had about 100 bushels of CANDOKA peaches this (1935) year and they were fine. Elbertas in Boise were selling for .70c per bushel basket, and I got \$1.00 per crate for CANDOKA. They went over big."

SAVE THE PEACH ORCHARDS

Some of this is new information but a part will be "old stuff" to many of our more progressive peach growers. In view of the fact that increasing profits from peaches maybe expected during the next five year period; it is highly important that all peach growers who have trees worth saving make every effort to rejuvenate and revitalize their orchards. Right now 80% of our orchards are either out of production, semi-neglected, or in a low state of vigor. That is no exaggeration.

From TENNESSEE HORTICULTURE. (December, 1934)

Candoka Brings Twice As Much On The Market

In the year 1933, Five Hundred 18 lb. boxes of CANDOKA Peaches sold at wholesale in Seattle, Washington for \$597.50 f.o.b. Wenatchee, Wash.—\$1.95 a box. Elberta netted less than half as much. J. H. Hale brought 68 cents per box.

In 1934 and 1935 Candoka repeated—all Candokas sold at Premium prices. Truckers in Wenatchee Valley paid 35 cents more per box for Candokas than for J. H. Hale in 1935.

Color Printing—Cascade Ptg. Co.

For Prices see pink pages at back of catalogue.

TWO GOOD NEW PEACHES

GOLDEN JUBILEE



**BRINGS TOP
EARLY MARKET
PRICES.**

It is a 'man made' peach. The New Jersey Experiment Station crossed the Greensboro (a very early white cling) with the Elberta. The Golden Jubilee was the result. It has taken the early season characteristics of the Greensboro and the good qualities of the Elberta. A large, yellow freestone, flavor superior to Elberta. Named Golden Jubilee, as original tree fruited in 1925—fifty years after founding of the New Jersey Experiment Station. Ripens a few days earlier than Carmen—a week earlier than Rochester and one month earlier than Elberta or J. H. Hale. It reaches the northern markets **AHEAD of CALIFORNIA ELBERTA and J. H. HALE.** The tree is as **HARDY as ROCHESTER.**

HISTORY AND DESCRIPTION OF THE BEST EARLY-SEASON YELLOW FREESTONE PEACH

REPORTS FROM GROWERS AND DEALERS

From a New Jersey Grower: "The GOLDEN JUBILEE is much more richly colored than ELBERTA. Flavor excellent. IT WILL TAKE THE PLACE OF ALL PEACHES WHICH RIPEN AT THE SAME TIME."

From Virginia: "The GOLDEN JUBILEE is of excellent quality, more color, better flavor and more beautiful flesh. Sells well on market and has paid growers here more than any other variety."

From Virginia: "The GOLDEN JUBILEE is of excellent quality and the best peach we know of in its season."

From Washington: "In 1931, shipped first Golden Jubilee July 11th; last, July 15th; sold for \$1.25 to \$1.00 (18 pound box); 1932 shipped first Golden Jubilee July 18th; last July 24th average selling price \$1.18. My six original trees, four years old, yielded 55 boxes and netted me nine dollars per tree. The Golden Jubilee

ripens its crop evenly, an excellent feature. Ripens 32 days ahead of Elberta."

From California: "Well pleased with the GOLDEN JUBILEE peaches (fruit) that you sent me. Glad I planted 360 trees this spring—and talk about growth—they have the look of two year old trees."

Note:—This party planted 420 more Golden Jubilee trees in Spring of 1936.

From a Seattle Commission House: "We believe the GOLDEN JUBILEE will take the place of the California Elberta. The first shipment of Golden Jubilee peaches from Washington was here a few days before the California Elberta."

In our own orchards, we have sixteen Golden Jubilee trees in bearing. Fruit ripens week earlier than Rochester. Larger than Elberta, more attractive in appearance. Quality excellent, and in our opinion the **very best early yellow freestone peach.** We recommend it especially for the **earlier districts.**

RIO OSO GEM

U. S. PLANT PATENT NO. 89

**A SUPER QUALITY
LATE SEASON PEACH**

Ripens about two weeks later than J. H. Hale—same large size, more color, firmer and finer texture and better flavor. No other freestone peach of comparable quality available at that time.

ORIGIN

Discovered near Rio Oso, California as a chance seedling. Its first fruiting was in 1926. The fruit was of such excellent quality that the discoverer planted seventy-five trees. These trees produced in 1930 and each season have borne heavy crops.

The set of the fruit each year has been extremely heavy, and has required heavy thinning—nine out of ten peaches being pulled off. Still the trees have each year borne all the fruit they could carry.

DESCRIPTION

TREE—Vigorous and upright grower. Limbs not easily broken and carry load of fruit well. Bears young.

FRUIT—Rio Oso Gem is a perfect freestone; is of extremely large size, averaging in diameter from 2 3/4 to 3 3/4 inches measured from end to end. Almost free from fuzz.

The surface of the peach is a brilliant dark crimson, shading to orange yellow.

FLESH—Deep yellow, very fine grained, firm texture.

FLAVOR—Excellent, rich, juicy and sweet.

Texture exceedingly firm and shipping quality good. Twenty-one boxes picked firm ripe and shipped by open express, without refrigeration, to many nurserymen east of New York state, without exception, were reported as arriving in perfect condition.

MATURITY—About two weeks after J. H. Hale. In the same orchard for three seasons, each season Rio Oso Gem matured 12 to 15 days later than J. H. Hale.

Rio Oso Gem when mature hangs well on the tree.

For Prices see pink pages at back of catalogue.

GRAPES



BERRIES

GRAPES can be planted almost anywhere; along fences, in corners, used as arbors, etc. They come into fruiting at a time of season when a little cash comes in very handy. They require little care and are an enjoyable plant to grow.

The American varieties are hardy and will grow in nearly every locality.

The European varieties are more tender and in some climates require winter protection.



BEARING GRAPE VINES LIKE THESE ARE A JOY

AMERICAN VARIETIES (Hardy)

Varieties are listed in order of ripening.

- Fredonia (Black)**—New early grape. Berries large, round, hang well, fine flavor.
- Moore's Early (Black)**—Bunch large, berries large, earlier than Concord.
- Portland (White)**—Berries sweet, juicy, fine flavor. Productive and hardy.
- Delaware (Red)**—Small, compact bunches, very sweet.
- Campbell's Early (Black)**—Large, sweet, juicy, good.
- Island Belle (Black)**—Large, early, good west of the Cascade mountains.
- Niagara (White)**—Bunches and berries large, the standard white grape, called "White Concord."
- Worden (Black)**—Earlier, sweeter and larger than Concord.
- Caco (Red)**—New grape of exceptional merit. Wine-red, compact bunch, good size, hardy, thrifty grower.
- Concord (Black)**—The standard black, everywhere, very productive.
- Agawam (Red)**—Large, thick skin, sweet.
- Catawba (Red)**—Large, dark copper, rich musky flavor, late, wine grape of Ohio.

EUROPEAN VARIETIES (Medium Hardy)

- Malaga (White)**—Very large bunches, good shipper.
- Ribier (Black)**—Largest, new, very fine.
- Black Hamburg (Black)**—A great favorite, large.
- Muscat (White)**—muscat flavor; excellent.
- White Sweetwater (White)**—Medium size, sweet, rich flavor, early.
- Rose Of Peru (Black)**—Large bunch, firm flesh.
- Thompson Seedless (White)**—Seedless, small, sweet, good drier.
- Flame Tokay (Red)**—Large, a favorite, one of the best.
- Zinfandel (Black)**—The most famous wine grape, enormous quantity of compact bunches, very juicy, sweet.
- Alecante Bouschet (Red)**—Sweet, bright red juice. A wonderful wine grape—even the leaves turn brilliant red in the fall.

CURRENTS GOOSEBERRIES

- Cherry**—Red, large, good.
- White Grape**—Large, golden green.
- Victoria Red (English)**—Large, pale red.
- Perfection**—Red, finest and largest known.

- Josslyn**—Red.
- Pearl**—Medium size, productive, hardy.

- Oregon Champion**—Largest, best commercial variety, free from mildew.

(Sell only in State of Washington)

No home garden is complete without berry plants. Easily grown and profitable as well.

DEWBERRY

Lucretia—Low growing, trailing, berry large and very fine.

YOUNGBERRY

Youngberry—Recent introduction, very fine, cross between Loganberry and Dewberry.

BOYSENBERRY

Boysenberry—Recent introduction. Berries very large and of fine flavor. Considered by many superior to Youngberry.

BLACKBERRIES

- Evergreen**—Large, delicious, bears from July to November.
- Lawton**—Well known market variety.
- Mercereau**—Hardy, upright stocky canes, heavy producer, sweet.
- Mammoth**—Rampant grower, trailing on ground, large.
- Himalaya Giant**—Vigorous grower, must be trained on trellis.
- Snyder**—Very hardy, enormously productive, medium size, early.
- Rathbun**—Strong, erect grower, compact bush, good quality.
- Thornless**—No thorns, trail on ground, or train on trellis, good

RASPBERRIES

- Chief**—New red—very fine.
- Cumberland (Black Cap)**—One of the best and largest of all Black Caps.
- Gregg (Black Cap)**—Good, old favorite.
- Kansas (Black Cap)**—Very hardy, good quality.
- Cuthbert (Red)**—Standard market variety, favorite
- Columbian (Purple Cap)**—Dark red, unexcelled for canning, jelly, jam.
- Latham (Red)**—New, disease resistant, very productive, large.
- St. Regis (Red)**—Everbearing, fine quality.
- Golden Queen**—Beautiful golden yellow; excellent quality.

LOGANBERRY

Loganberry—Very large fruit, strong grower, trailing vines.

STRAWBERRIES

(For spring delivery)

25% with order, balance C. O. D. express or parcel post. No order accepted for less than 25 of a variety.

STANDARD VARIETIES

- Clark Seedling (Hood River)**—Large, firm, good shipper.
- Magoon**—Hardy, good.
- Marshall**—Large, good canner.
- Premier**—Early, good quality, productive, favorite in Wenatchee valley.
- Dorsett**—New, early heavy bearer, large, good shipper.
- Fairfax**—New, early, fine flavor, very firm.

EVERBEARING VARIETIES

- Gem**—Heavy bearer—beautiful color and shape—delicious flavor and a firm market berry.
- Progressive**—Medium size, sweet, fine quality.
- Mastodon**—Largest, heavy bearer.

EVERGREENS

Evergreens are the aristocrats of the Plant World. They give dignity and charm to the home grounds.

The charm and beauty of the home enhanced with a delightful evergreen foundation planting, is irresistible. An evergreen planting will give the richness to the exterior of the home that oriental rugs give to the living room. The architectural beauty of the home, especially the entrance, can be pleasingly emphasized with evergreen planting.

In choosing evergreens for foundation planting, it is best to use medium and dwarf growers for permanent effects. Plant the taller varieties at the corners, at points in the foundation where there are no windows and on each side of the entrance. Plant dwarf growers under low windows or wherever low planting is desired.

Between groups of evergreens, may be planted groups of flowering shrubs or broad leaved evergreens, to give color and variety to the foundation planting.

Our evergreens have been frequently transplanted, thus a compact root system is developed, most of which is contained in the earth ball, which is carefully dug and burlap-wrapped at our nursery.

When planting dig the holes wide and deep enough easily to admit the earth ball. Set the tree straight, with the top of the ball about two inches below the ground level. (Some spreading evergreens are set at picturesque angles.) Tamp soil firmly around the bottom half of the ball, and then cut away burlap from the top half. Water the ball thoroughly, before finishing filling the hole with soil.

Evergreens must be watered thoroughly when transplanted, and frequently thereafter for the first year, after which they will require less water than deciduous trees.

Evergreens are sold F. O. B. the Nursery; freight or express to be paid by the purchaser.

JUNIPER

Canadensis—A very dense gray-green. Slender branches. A wide spreading plant, grows 2 to 3 feet high.

Chinese Upright, Mascula—Light green pyramidal. Rapid grower.

Coast of Maine—Bar Harbor Juniper. A true creeper, wonderfully effective in rock gardens. Blue green.

Irish—Narrow upright—dark green.

Pfitzer—Spreading, silvery-gray-green, feathery in appearance. Suited for exposed situations.

Reeves—A spreading juniper of picturesque form. Beautiful dark foliage.

Sabina—A dark evergreen shrub, with many branches growing upward but somewhat spreading, ultimately 2-3 feet.

Scopulorum—Silver red cedar. Upright pyramidal tree very distinct and desirable.

Spiny Greek—Compact and shapely dwarf. Very dark green.

Tamariscifolia—Creeping, dark, blue-green foliage. Excellent for edges of groups, banks and rock garden.

Virginiana (Eastern Red Cedar)—Our stock has been trimmed to compact pyramidal forms. Fine for corners, and specimen planting.

Von Ehren—A rare and picturesque tree. Dark green foliage like Sabina, branches grow semi-upright, wide spreading, somewhat fan shaped. A rapid grower.



BEFORE PLANTING

ARBORVITAE (Thuja)

American—Broad pyramidal, light green, stands shearing well, much used for hedges.

Berkman's Golden—Compact, broadly pyramidal, colorful and shapely tree.

Lobi Aurea—Similar to American with golden foliage.

Orientalis Daly Nana—Similar in size and habit to Berkman's but bright green.

Beverlyensis—Golden colored foliage, columnar form.

Oriental—Broadly pyramidal fairly rapid grower, flat upright branches, bright green in summer, bronzy green in winter. Trimmed specimens.

Pyramidalis—A dense columnar type, foliage deep green.

Pyramidalis, Douglas—Dark green with upright spiral branches.

Tom Thumb—Sheared into globe form, fine dark green foliage.

Thuja Globosa—A very pleasing green, dense foliage, grows into a compact globe without trimming.

FIR (Abies)

Concolor (Silver Fir)—Very beautiful, graceful and stately. An ornament for any lawn. It has long silvery green to blue-green foliage and branches. Rapid growth.



AFTER PLANTING

EVERGREENS---Continued



Evergreens Add Beauty To This Wenatchee Home

RETINOSPORA

Filifera—Light green thread like foliage, gracefully pendulous. A medium dwarf bushy tree.

Pisifera—Open and tall growing, erect branches pendulous at tips, foliage lacy, light green—new growth golden.

Plumosa—Handsome blue-green foliage. Soft plume-like appearance. Medium tall in growth.

Retinospora Obtusa (Hinoka Cypress)—A slender pyramidal, very picturesque, irregular branches, deep green, slow in growth.

SPRUCE

Colorado Blue—A fine showy specimen tree (See illustration).

Colorado Green Spruce—Same as above only green needles.

Kosters Blue Spruce—Grafting specimens. Symmetrical and shapely. Always a true blue color.

Norway Spruce—The Christmas tree spruce. Very effective in evergreen groups. Rapid growing, excellent for wind-break and hedge. Stands shearing well.



CONCOLOR (Silver) FIR

PINUS (Pine)

Austrian Pine—Rich green color, carrying its foliage to the ground. It is a fine robust landscape pine.

Scotch Pine—Another rugged picturesque pine.

Mugho—Dwarf pine—globe shape. A fine little tree that fits into many landscape situations.

Tanyosha Globosa—The Japanese Table Pine. A rare little tree of unique shape. A rock garden gem.



COLORADO BLUE SPRUCE

BROAD-LEAVED EVERGREEN

Balled and Buraped

Berberis Verruculosa—Leaves look like holly only tiny and glaucous underneath. The hardiest evergreen barberry.

Cotoneaster Horizontalis—A trailing plant of the fine foliage and red berries, leaves color beautifully in autumn.

Cotoneaster Humifusa—A trailing plant of fine foliage and berry effect. Needs a little protection east of the Cascades.

Daphne Cneorum—A very dwarf shrub. Pretty foliage and a mass of pink, very fragrant flowers in April and May, and at intervals thereafter.

Ilex Crenata (Japanese Holly)—Small oval leaves—very dark green. Interesting for foliage variety. Hardy.

Mahonia (Oregon Grape)—Deep glossy green. Holly-like leaves. Bright yellow flowers and clusters of blue berries.

Pyracantha Lalandi (Firethorne)—Semi-evergreen foliage, white flowers—orange red berries in fall and winter.

Yucca Filamentosa—Sword-like evergreen leaves—flower spikes grow 4 to 5 feet, with oddly beautiful creamy flowers.

Yucca Variegated—Variegated foliage, a fine accent plant.

SHADE and ORNAMENTAL TREES



NORWAY MAPLE—A Favorite For Park Or Street

- Ailanthus (Tree of Heaven)**—A very rapid grower. Tropical in appearance, hardy and thrives in adverse conditions.
- Ash (White Ash)**—A native hard wood, forms a shapely round top—good foliage—fairly fast growing.
- Birch (European White Birch)**—Attractive white bark, good foliage and shape make it a very desirable tree for street, lawn and landscape effect.
- Box Elder**—Fast growing—spreading tree.
- Box Elder Variegated**—Silvery variegated foliage, a striking variety.
- Catalpa Speciosa (Western Catalpa)**—Large leaves and large clusters of white attractive flowers.
- Catalpa Bungei (Umbrella Catalpa)**—Dense round headed tree, fine for formal plantings.
- Chestnut**—See nut trees, page 12.
- Flowering Cherry (Japanese)**—Kwanzan variety. One of the finest ornamentals of all the many wonderful trees imported from Japan—large double—deep pink flowers; remains in blossom longer than most flowering trees.
- Flowering Crab (Bechtels)**—One of the finest, double, bright pink fragrant flowers.
- Carmine Crab (Atrosanguinea)**—Strong growing tree—single red flowers. Attractive foliage and fruits.
- Floribunda (Japanese Flowering Crab)**—A small tree literally covering with rose pink flowers—tiny yellow fruits.
- Scheideckeri Crab**—Free flowering—double pink—orange colored fruits good for jelly.
- Sargents (Dwarf Crab)**—Pure white flowers with yellow stamens—tiny red apples that persist into winter.
- Elm (American)**—A majestic native tree of great size and wide spread—fairly fast growing.

- Elm, Cork Bark**—Dark clean foliage—corky bark.
- Elm, Moline**—Tall upright habit of growth—a very desirable tall spire-like tree—beautiful dark green foliage.
- Elm, Vase**—A picturesque vase shaped sport of American Elm.
- Elm (Pumila) Siberian or Chinese Elm**—An exceedingly fast growing tree—will thrive in adverse soil and climate. The fine attractive foliage grows a dense shade quickly.
- Ginkgo (Biloba)**—Maidenhair tree. A very unique and interesting tree, especially since the recent discovery of the Ginkgo petrified forest near Vantage, Central Washington. But for specimens found in Chinese gardens, this tree would have been extinct.
- Hawthorne, Paul's Scarlet**—A brilliant sight in bloom with attractive foliage and fruit.
- Horse Chestnut**—White flowering—beautiful foliage and spikes of white flowers from each large terminal bud makes this a grand specimen or street tree.
- Horse Chestnut (Pink Flowering)**—A most gorgeous sight when in blossom. A beautiful specimen tree.
- Linden (American or Basswood)**—A splendid tree for street, lawn and park planting, fragrant yellow bloom.
- Linden, European**—Small leaf—symmetrical and compact.
- Locust, Black**—A very rapid growing tree, covered in June with sweet scented, white flowers. Valuable as a quick-growing shade tree, and for its hard wood.
- Locust, Globe**—Its top forms a very dense, almost perfect globe shape without trimming. The beautiful acacia-like foliage, similar to the Black Locust, comes early and persists after most trees are bare. Globe Locust thrives in most any soil and climate, usually rounding into perfect shape the first year. An outstanding formal tree for landscape effects and especially desirable where overhead wires make taller trees impractical. Our Globe Locust have heads formed on straight stems 6 to 7 feet high.



Globe Locust—Make Beautiful Street Trees

- Honey Locust**—Vigorous rapid growing tree with feathery, fern-like foliage, long thorns and seed pods.
- Honey Locust**—Thornless. The same beautiful foliage tree without the thorns.
- Locust Rose or Moss Locust**—Dwarf growing bushy heads of mossy twigs. Attractive foliage and rose-pink pea-shaped flower clusters. Top budded on straight stems.
- Locust, Pink Flowering**—A fine new tree similar in foliage and habit of growth to Black Locust, bearing clusters of deep pink flowers. Pink Flowering Locust grows into a strong large tree rapidly and will rival the dwarf ornamentals for beauty of flower.
- Maple, Norway**—A large handsome tree—rounded form. One of the best shade trees and for a street tree ranks about the top. Is fast growing for a hardwood tree.
- Maple, Red (Acer Rubrum)**—A native of the eastern forests, valued for its brilliant scarlet foliage in autumn.
- Maple, Schwedleri**—Schwedler's Norway Maple. Strikingly beautiful—its leaves at first bright purple or crimson, later changing to dark green; in autumn, golden.
- Maple, Silver or Soft Maple**—Grows rapidly, large spreading tree.
- Maple, Sugar**—A well known native of the eastern woods; fine form and foliage which assumes beautiful autumn tints.

SHADE and ORNAMENTAL TREES---Continued



Japanese Flowering Cherry
—at Washington, D. C.

We have Japanese Flowering Cherry in both upright and weeping trees. They are beautiful, striking ornamentals.

Maple, Sycamore—A handsome tree of rapid upright growth.

Maple, Japanese Red Leaf—(See shrubs).

Mountain Ash, European—Small tree, attractive foliage—small white flowers in late spring—clusters of red berries from midsummer until midwinter.

Mulberry, Russian—Fast growing tree—light green foliage. Fruit greatly relished by the birds—often planted near cherry trees where birds are a menace to the crop.

Oak, Red Oak—Foliage very attractive especially in autumn.

Oak, Pin—Graceful pyramidal tree.

Poplar, Carolina—Particularly suitable for planting where quick results are of first importance.

Poplar, Lombardy—Tall spire-like outline makes it picturesque feature of a landscape. Fastest growing tree for wind-break.

Prunus, Bieriana—Small tree with purple tinted foliage, double pink flowers very early.

Prunus, Cistena—Its purple red foliage keeps its color all summer.

Prunus, Cameliflora (double flowering peach)—Bright pink—one of the most brilliant early blooming trees.

Prunus, Davidiana—Harbinger of Spring. The very earliest of tree blossoms—like peach blossoms.

Prunus Pissardi—Purple leaf plum. Much used for its flowers, foliage and fruit.

Prunus, Triloba—Early, before the leaves appear, the slender branches of this little tree are solid festoons of glorious double pink rose-like flowers. Triloba is a sensation every spring.

Russian Olive—A quick growing tree with slender silvery leaves and twigs. Tiny silver bell shaped flowers and small silvery seed balls all summer. Interesting color contrast with other foliage.

Red Bud (Cercis)—Small shrub-like tree. Flowers profusely in early spring—the branches covered with small purplish rose flowers. A graceful little tree for accent in the shrub border.

Siberian Pea Tree (Caragana)—Upright growing little tree—attractive light green stems and leaves. Yellow blossoms hang in clusters like locust bloom.

Sycamore, American Plane Tree—A fine specimen or street tree—quickly grows to a lofty wide spreading tree; dense foliage, bright green leaves—seed balls are interesting in winter.

Sycamore, European Plane Tree—A favorite tree for street planting and parks—grows rapidly and withstands smoke and city conditions—good foliage. Bark flakes from the trunk and older limbs leaving mottled interesting effect.

Tulip Tree (Liriodendron)—Handsome pyramidal tree—interesting foliage; a good shade tree with light yellow flowers in shape and size like tulips. A novel hardy tree.

Walnut—See nut trees page 12.

Willow Golden—Golden yellow twigs and bark especially attractive in winter and early spring. Quick shade.



Globe Locust
A beautiful tree. Every yard should have them.



SIBERIAN ELM—A Clean, Fast Growing Shade Tree

WEeping TREES

Birch, Cutleaf—Tall slender yet vigorous in growth—graceful drooping branchlets, with delicately cut foliage. The white bark of trunk and limbs make it a tree of rare beauty summer and winter. Very popular for single specimens or groups.

Elm, Camperdown—A vigorous grower and one of the most picturesque drooping trees. Leaves large, dark green and glossy, covering the tree with a luxurious mass of verdure. Height 8 to 10 feet. Branches droop nearly to ground.

Japanese Flowering Cherry—Deep pink double flowers beautifully displayed on the graceful archings and drooping branches.

Mulberry—Forms a perfect umbrella-shaped head with long slender branches drooping to the ground.

Flowering Peach—One of the most brilliant flowering trees—single coral pink.

Willow Niobe — Golden twigs; showy tree in winter and early spring.

Willow Wisconsin—A large tree with long, drooping branches—very fast growing.



Japanese Weeping Flowering Cherry

ORNAMENTAL SHRUBS

Shrubs are the life of the Landscape Picture, brightening up and setting off the home, garden or park with their colorful bloom and varying foliage effects. Shrubs may be so arranged as to produce flowers and ornamental foliage from early spring until late autumn. Even in winter the shrub border is sometimes strikingly beautiful, with colorful twigs and berries and occasional displays of hoarfrost and snow even surpassing the beauty of their blossoms.



Forsythia

Blooms early, beautiful yellow

Acer (Redleaf Japanese Maple)—

A dwarf shrub like tree. Its rich purple-red foliage is a great attraction in any garden. Very effective with evergreens.

Red Cutleaf Japanese Maple—

Foliage of new growth bright red—mature leaves turn dark purple. Leaves deeply cut, forming a lace-like effect. Very dwarf and spreading.

Althea (Rose of Sharon)—A large

shrub—dark glossy green foliage, flowers from August until frost. Double, red, pink and white.

Almond, Pink Flowering—in early

spring before the leaves appear this little shrub brightens the landscape with double pink flowers crowded along its slender stems.

Almond, White Flowering—A good specimen or hedge of this pure white shrub is exceptionally pretty.

Azalea Mollis (Chinese Azalea)—A dwarf shrub—large buds open before leaves appear, clusters of brilliant flowers ranging from salmon and orange to red.

Barberry, Japanese—Thunburgi. Small graceful shrub useful for foundation planting, in the border and hedge, brilliant autumn coloring, scarlet berries all winter.

Barberry, Red Leaved—A brilliant colored plant, varying with season and exposure from bronzy red to bright crimson, red berries all winter.

Box Barberry—A dwarf type of Japanese Barberry, excellent for edging and guarding upright evergreens.

Barberry Erecta (True Hedge Columnberry) Plant Patent No. 110—Upright growing sport of Japanese Barberry, excellent for narrow hedge or ornamental.

Beauty Bush (Kolkwitzia)—A new graceful shrub, attractive at all times, masses of delicate pink flowers in spring.

Buddleia (Butterfly Bush)—Will grow to large shrub each year from crown, long spikes of lilac-like blossoms from July until frost.

Buckthorn—Large shrub, creamy white flowers, shiny black fruits.

Button Bush—Large glossy foliage, button-like flowers.

Calycanthus (Sweet Scented Shrub)—Glossy green foliage and odd chocolate colored flowers.

Clethra Alinifolia (Sweet Pepper Bush)—Attractive little shrub, creamy white flower spikes. July to September.

Coral Berry—A graceful plant, slender drooping branches thickly studded with coral red berries in fall and winter.

Cornus Florida—Large white flowering dogwood, showy flowers, attractive large shrub leaves turn red in autumn.

Cornus Florida Rubra—Pink flowering dogwood, a rare and beautiful small tree.

Cornus Siberica—Red stem dogwood, flower heads white, berry clusters blue.

Cornus, Lutea—Yellow twig dogwood, desirable for winter effect.

Deutzia Crenata Rosea—Tall growing shrub, densely covered in June with pink sprays of flowers.

Deutzia Gracillis—Pure white flowers in May, a dwarf plant and a profuse early bloomer.

Deutzia Lemoine—Medium size shrub, white flowers in May and June—valuable in many landscape situations.

Deutzia, Pride of Rochester—A fine tall growing shrub, branches in June become long pendulous sprays of pink tinged white flowers.

Cotoneaster, Acutifolia, Pekin Cotoneaster—A hardy graceful variety, medium height, glossy foliage, black fruits.

Cotoneaster, Simonsi—Upright growing, pink flowers, followed by showy red berries late summer, fall and winter.

Elder, Golden—Hardy, rapid growing, yellow foliage.

Euonymus, Alatus—Corky winged, its foliage turns a warm crimson in autumn.

Euonymus, European—A large erect shrub with conspicuous red and orange berries in autumn.

Forsythia, Fortun—Upright growing shrub with very early bright yellow flowers appearing before the foliage.

Forsythia, Suspensa—Strong growing variety, pendulous branches, large golden bells.

Forsythia, Spectabilis—The showy border Forsythia.

Honeysuckle, Fragrantissima—Sweetly fragrant, creamy flowers, spreading graceful foliage plant, half evergreen.

Honeysuckle, Tatarica—White flowers. A large shrub sometimes growing to 10 feet, good foliage, orange berries.

Honeysuckle, Tatarica—Pink flowers, otherwise same as white.

Honeysuckle, Tatarica—Red. Light red flowers.

Hydrangea, Arborescens—Hills of snow. The name describes what can be expected of this plant over a long part of the summer.

Hydrangea, Paniculata Grandiflora—A very popular shrub. The tip of every branch in July develops a white flower head which expands to nearly a foot in length, turning pink in autumn.

Jetbead—White Kerra—A good foliage plant for shade or sunshine, white flowers, then jet black beads.

Kerria, Japonica—Slender green stems, attractive in winter, yellow rose like flowers in summer.

Lilac—Common purple or common white.

Lilac, Persian—A large shrub, slender branches, purple lilac flowers.

Lilac, Rothomagensis—Darker flowers than Persian.

Lilac, Charles Joly—Dark purple red flowers, double, one of the darkest.

Lilac, Charles Tenth—Single reddish purple, fine.

Lilac, Ludwig Spaeth—Single large purple red—one of the best of its color.

Lilac, Marie Legraye—White flowers of immense size.

Lilac, Michael Buchner—Dwarf plant very double, light blue flowers.

Lilac, President Grevy—A favorite blue.



Spirea, Anthony Waterer

Mock Orange
(Philadelphus Virginal)

ORNAMENTAL SHRUBS---Continued



Group planting, C. & O. display grounds, Wenatchee

- Ninebark, Golden Spirea**—A large shrub, useful in the shrub border, golden bronze foliage, creamy flower heads and reddish seed clusters.
- Philadelphus, Mock Orange**—Upright growing shrubs valuable for hedge and border, profuse bloomers of very fragrant white flowers in early summer. Cornarius resembles the native Mock Orange.
- Philadelphus, Grandiflora**—Very rapid growing, tall variety.
- Philadelphus, Lemoine**—A French hybrid, medium size, slender graceful branches, better foliage effect than other Mock Oranges.
- Philadelphus, Virginal**—Double, very fragrant and beautiful, will furnish some blossoms at intervals all summer.
- Prunus, Triloba**—Also listed with trees, valued either as a dwarf specimen tree or in the border. Before the leaves appear the slender branches are literally covered with double bright pink flowers like small cluster roses, known as the Rose Tree of China.

Quince, Japanese Flowering—Orange - scarlet flowers, very early. Continues to blossom until the attractive new foliage covers the shrub. A valuable shrub for most any situation.

Quince, Japanese, Dwarf—Low and spreading with orange colored blossoms, yellow fruit.

Rhus Cotinus (Smoke Tree or Purple Fringe)—A large shrub, panicles of fluffy purple flowers.

Snowball—See Vib. Opulus Sterilis.

Snowberry—Slender, medium-growing shrub. Rose colored flowers in June, followed with milky white berries which last until winter.

Spirea, Anthony Waterer—Dwarf, produces flat umbels of red blossoms all summer.

Spirea, Arguta—Medium growth, graceful, early, white.

Spirea, Billardi—Upright, pink flower spikes July and August.

Spirea, Prunifolia—The true bridlewreath, long graceful arching branches, covered with tiny double white blossoms.

Spirea, Thunbergi—Rather dwarf, earliest to bloom, attractive lacy foliage all summer.

Spirea, Van Houtte—An all purpose shrub, the most common shrub because it is just about the best shrub.

Spirea, Sorbaria Aitchinsoni—Earliest green foliage in the garden, a large fine foliage plant with creamy white flower spikes in summer.

Stephanandra—Delicate and attractive foliage, creamy flower spikes, tops half-hardy, but renews itself.

Sumac, Cutleaf—Lacy fern-like foliage.

Sumac, Staghorn—Large fine foliage plant, antler like branches.

Tamarix, Africana—Large shrub, feathery foliage, slender branches covered with pink flowers in early spring.

Tamarix, Hispidia—Covered several times in summer with billowy masses of pink flower spikes, very beautiful, large shrub.

Tamarix, Odessana—Similar to Hispidia except more dwarf and more spreading in growth.

Viburnum, Carlesii—Fragrant viburnum, a fine new dwarf plant, buds pink, open flowers white. Its gray-green foliage is also interesting.

Viburnum, Dentatum—Arrow-wood. Foliage purple and red in autumn, blue-black berries.

Viburnum, Lantana—Large shrub gray-green, attractive foliage, white flowers in May, fruit clusters crimson in summer, turn to black

Viburnum Opulus—High bush cranberry, dense cymes of white flowers, setting large bunches of crimson berries.

Viburnum, Opulus Sterilis—Common Snowball, usually loaded with its pure white balls Decoration Day, and like most of the viburnums its foliage turns crimson autumn colors.

Viburnum, Plicatum (Japanese Snowball)—One of the finest snowballs, clean deep green foliage, makes a fine setting for abundant white blooms in June.

Viburnum, Tomentosum—In May the branches become beautiful sprays of flat flower heads, ivory buds and pure white open flowers, fruits red to blue-black, excellent foliage.

Weigelia, Eva Rathke—Rather dwarf and spreading, it blooms freely with carmine red flowers most of the summer.

Weigelia, Floribunda—Strong growing and spreading, flowers lighter red and larger than Eva Rathke.

Weigelia, Rosea—Upright compact shrub, rose-pink, bell-shaped blossoms in great profusion in June.

Weigelia, Variegated—Leaves variegated with white, a showy shrub similar to Rosea in flower and form.

HEDGE PLANTS

Arborvitae, American—An evergreen tree that can be sheared into a beautiful hedge.

Norway Spruce—Dark green, evergreen, that stands shearing well or makes a fine tall hedge or windbreak grown naturally.

Barberry, Thunbergi.

Barberry, Red Leaf.

Privet, English—Hardy and excellent foliage.

Privet, Lodense—Thick growing excellent foliage that usually remains all winter, for low trimmed hedges. It is superb.

VINES AND CREEPERS

Celastrus Scandens (American Bittersweet)—Large shrubby vine, orange-crimson berries in winter.

Spirea Var. Houtte

VINES AND CREEPERS

Celastrus Scandens (American Bittersweet)—Large shrubby vine, orange-crimson berries in winter.

Clematis Jackmani—Large purple, most popular of the large flowering clematis, difficult to grow but a great attraction.

Eucnymus Radicans Vegetus—A trailing vine with evergreen leaves. Rapid grower. Very hardy.

Euonymus Radicans Variegated—Dwarf vine with glossy variegated evergreen leaves. Slow grower. Very hardy.

Honeysuckle, Dutch Fragrant—Red and yellow flowers.

Honeysuckle, Scarlet Trumpet—A good vine, brilliant flowers.

Honeysuckle, Ha's Japan—Foliage almost evergreen, yellow, very fragrant flowers.

Matrimony Vine—Has bright purple star-shaped flowers, succeeded by brilliant scarlet berries. Fine for porches. Very hardy.

Trumpet Vine, Bignonia—A robust vine, large orange-scarlet trumpet flowers.

Ivy Boston, or Japan—Clings flat to masonry.

Ivy, Englemann—A very good climber, fast grower. Leaves are beautiful in summer turning a rich crimson in autumn.

Virginia Creeper—Quick growing shade, crimson in autumn.

Wisteria, Chinese—Purple. Fast growing vine, long flower clusters.

Wisteria, White.



PEONIES

No flower excels the Peony for beauty and profusion of blooms. Hardy, easily grown



From this hardy, prolific bloomer, near Wenatchee, our Purple Wisteria is propagated

GAZING GLOBES

For garden ornaments of character like the centerpiece in the picture to the right. They reflect all of the beauty of garden, trees and sky and are always a great attraction.

Globe sizes from 8 inches to 16 inches in diameter.

Various types of pedestals.



Scene from the beautiful Horticultural Gardens at A Century of Progress Chicago. Vigoro was used to keep the exhibition gardens looking their best throughout the 1933 and 1934 Fair season.

for lawn and garden beauty

PEAT MOSS

(Granulated)

Peat Moss improves any soil. Granulated peat puts millions of moisture holding particles (humus) into your soil. Peat Moss breaks up hard clay soil, prevents hard ground from baking and drying out. Peat Moss fills sandy ground with organic humus that becomes a reservoir for moisture and plant food.

Your lawn, roses, evergreens, shrubs, trees, rock garden and flowers, all need GRANULATED PEAT.

Clean, odorless, free from fungus and weed seeds. Peat Moss is economical to use. Saves water bills and best of all helps every kind of plant in your garden to grow better. Newly planted lawns should have a top dressing of Peat Moss, to insure a moisture supply at the surface and obtain a good germination. Do not confuse our Granulated Imported Peat Moss with bog-earth sometimes obtained from swamps.

Granulated peat comes in large tightly compressed bales containing approximately 20 bushels of loose peat, which will cover 250 to 300 square feet one inch deep.

GRASS SEED

The first requirements of a good lawn are a good seed bed, plenty of good seed, and ample moisture at all times. It is imperative that a good thick stand of grass be secured as quickly as possible to withstand the summer heat.

We recommend one pound of grass seed to 200 square feet.

After extensive study of lawn grasses we have formulated our C. & O. Lawn Mixture which has proven satisfactory under all ordinary conditions, and we believe it as near foolproof as any lawn seed can be.

We also mix lawn seed to suit special requirements of our customers.

GARDEN BOOKS

"What Every Rose Grower Should Know," a McFarland book every rose grower should have. Cloth bound, 80 pages, numerous illustrations. Price \$1.00.

We have a complete list of garden and horticulture books, covering every subject of interest, by the foremost writers. Send for our catalog of garden books. Good books are a treasure in your home library and make a most appreciated gift.

Use **VIGORO**
COMPLETE PLANT FOOD

Clean, Odorless, Economical

To get a full measure of beauty from your lawn and garden you must feed them regularly with a complete, balanced plant food. We recommend that you use Vigoro.

Vigoro is sanitary and odorless and does not contain weed seeds or refuse which are so objectionable to work with. It is especially formulated for use by the home gardener, supplying lawns, flowers, shrubs, trees and vegetables with the nourishment they need for finest growth. It is most economical to use for only four pounds are required to feed properly 100 square feet of lawn or garden area.

Vigoro Is Easy To Use

TREE PROTECTORS

Protect young fruit trees from injury by Mice, Rabbits, Borers, Sunburn, with our Veneer Tree Protectors.

Thousands of these dependable tree protectors are in use in the orchards of Central Washington. The cost is insignificant, and they last for years.

They come rolled and ready to put on easily and quickly. Wires going entirely around the protector hold it securely in place.

They come in two sizes—for small and large trees.





ROSE, COUNTESS VANDAL

U. S. Plant Patent No. 38

The Rose of Roses! "Countess" has been enthusiastically received by Rose-lovers. Its long, pointed bud, its distinctive shadings of coppery bronze suffused with soft gold, and its form are a continuous "movie" developing new beauty at all times during its long life. Countess Vandal has been the sensation of all foreign shows, winning all medals and trophies in 1931 and 1932, and has been widely acclaimed in American shows. The plant is vigorous and blooms unceasingly throughout the summer. A leading seller among Hybrid Tea Roses.

For Prices see pink pages at back of catalogue.

THE ROSE—Loveliest of All Flowers

“C. & O.” ROSES ARE ROSES OF QUALITY

Strong field grown No. 1 rose bushes budded on hardy root stock. Plant the right varieties, the right kind of stock, treat them right, (we can inform you how) and roses will reward you bountifully. From early summer until winter freezes, sensation after sensation will unfold in your garden.

Our rose list contains the best of the NEW PLANT PATENTED VARIETIES and the best of the older varieties that have stood the test of time.

H.T. indicates Hybrid Tea. — H.P., Hybrid Perpetual — Poly., Polyantha

QUALITY ROSE LIST

ALEZANE—(Plant patented). See illustration.

AMERICAN BEAUTY—(H.P.) Hardy rose-crimson.

ANGELE PERNET—(H.T.) Brilliant colored and fragrant—mandarin and yellow.

ANNE POULSEN—See illustration below.

BETTY UPRICHARD—(H.T.) Salmon Pink—two-toned—buds carmine, spicy fragrance.

CALEDONIA—(H.T.) One of the best white roses—long buds—large full and lasting flowers and fragrant.

CECIL—(H.T.) A superb novelty—rich yellow—single—with a mass of golden stamens.

COUNTESS VANDAL—(Plant Pat.) See illustration Pg. 29.

DAME EDITH HELEN—If there is a perfect pink rose this is it—large long buds open to full—high centered—exhibition form roses—with plenty of fragrance and good stems.

DAINTY BESS—(H.T.) Rose pink—single—one of the daintiest roses grown.

DIRECTOR RUBIO—(H.T.) A strikingly novel rose—cochineal pink—immense flowers—mammoth long buds.

DUCHESS OF WELLINGTON—(H.T.) Extra long buds of golden orange—opening to saffron yellow—fragrant.

ETOILE DE HOLLAND—(H.T.) (Star of Holland). Generally recognized as the world's finest red rose—brilliant scarlet.

EDITOR McFARLAND—(H.T.) Perfectly formed flowers of brilliant pink—an excellent cutting rose—a Gold Medal rose.

GLOAMING—See illustration page 31.

E. G. HULL—(H.T.) Large, full, fragrant, scarlet rose. Superb.

FEU JOSEPH LOOYMANS—Profuse bloomer—extra long pointed buds—fairly full yellow flowers shaded apricot.

FRAU K. DRUSCHKI—(H.P.) Snow Queen—a grand old hardy rose.

GEORGE AHREND—(H.P.) (Pink Druschki). Immense soft pink—beautifully shaped rose—very fragrant.

GOLDEN OPHELIA—(H.T.) Rich golden flowers—a continuous and profuse bloomer of fine cutting roses.

GOLDEN DAWN—(H.T.) Buds sunflower-yellow, opening to lighter yellow—tea scented—a free bloomer and considered one of the finest yellow roses.

GRUSS AN TEPLITZ—(H.T.) Vivid firey-crimson—a most prolific rose for garden display.

HOOSIER BEAUTY—(H.T.) Glowing crimson-scarlet—a bright spot in the rose garden and excellent for cutting.

For Prices see pink pages at back of catalogue.



ALEZANE (Plant Pat. No. 116)
A new Spanish rose. Reddish brown bud shading to apricot. Yellow center. First to bloom in spring. Vigorous grower, strikingly beautiful.



ANNE POULSEN (Plant Pat. Applied for). Beautiful new, Polyantha type, ideal for hedge or border. Large semi-double, crimson scarlet blooms always present. Fragrant, robust and hardy.

ISOBEL—(H.T.) Exquisite pointed buds—pink, orange shaded—single flowers.

IRISH FIREFLAME—(H.T.) Buds are very long and slender—beautifully spiral and richly colored—pink and gold—single.

JOAHANA HILL—Very double—golden yellow—Indian-yellow center.

KAISERIN AUGUSTA VICTORIA—(H.T.) Creamy white—introduced in 1891 and still about the finest white rose.

LADY HILLINGDON—A yellow tea rose—so good in color, form, fragrance and habit that hundreds of newer roses cannot crowd it aside.

LOS ANGELES—(H.T.) Perfectly formed long-pointed buds and full flowers of luminous flame-pink toned coral and gold at base.

MARY HART—(H.T.) (Plant Pat.) See illustration Pg. 27.

MATADOR—See illustration below.

MAY WETTERN—(H.T.) Long buds and full, long stemmed flowers of rosy pink. An exhibition rose, free flowering and vigorous.

MME. BUTTERFLY—(H.T.) An old favorite—bright pink suffused apricot.

MME. CECIL BRUNNER—(Polyantha) Perfectly shaped miniature rose of clear pink, yellow base. Exquisite and prolific.

MME. EDOUARD HERRIOT—(H.T.) Coral red buds—flowers orange and salmon pink. Profuse and continuous bloomer.

MISS ROWENA THOM—(H.T.) Rose-pink — exhibition form two-toned rose of great size and beauty.

MRS. PIERRE S. DU PONT—(H.T.) Rich golden yellow. Winner of more gold medals than any other garden rose—very free bloomer.

MRS. E. P. THOM—(H.T.) Clear canary-yellow—very double and finely formed flowers—excellent bedding and cutting rose.



GLOAMING (Plant Pat. No. 137). Color soft satiny pink with salmon and amber base. Delightfully fragrant. Excellent for cutting long rigid stems bloom long lasting. Vigorous grower.



MATADOR (Plant Pat. Pending)
A great red, red rose, Blossoms large, full flashing scarlet crimson. Will live up any garden.

NIGRETTE—(H.T.) (Plant Pat.) See illustration.

PRESIDENT HOOVER—Has proven to be one of the best garden roses in existence—beautiful buds and blooms on long stems. Multicolored scarlet-yellow pink and flame tints.

REV. F. PAGE ROBERTS—Buds of golden yellow stained copper and reddish buff flowers—large—scented.

SOUV. MME. C. CHAMBARD—(H.T.) Coral-pink chosen as the most beautiful rose of France 1932. Strong plant—freely produces long pointed coral buds which open to large fragrant coral pink blooms of great substance and beauty.

SUNBURST—(H.T.) Fine yellow flowers suffused with orange at the center—fragrant and prolific.

TALISMAN—(H.T.) A novel combination of colors—a golden yellow outside—stained with copper—red and orange-rose on inside of the petal—unique shaped buds and flowers—produced abundantly by a strong growing plant. One of the finest cutting roses.

TOKEN—(H.T.) (Plant Pat.) See illustration.

WILLIAM ORR—(H.T.) Very fragrant—double blooms on strong stems. Brilliant, deep velvety crimson.

For Prices see pink pages at back of catalogue.

CLIMBING ROSES

Climbing Roses offer endless opportunities for graceful festooning along a fence, arched over a favorite entrance, covering garages, and bringing masses of color in foliage and flower to beautify otherwise ugly or vacant spaces.

AMERICAN BEAUTY CLIMBER—Large flowers—rosy-red.

AMERICAN PILLAR—Single rosy-pink flowers with white centers and yellow stamens—clean shining foliage.

BLAZE—(Plant Pat.) See illustration at right.

CHAPLINS PINK CLIMBER—Resembles Paul's Scarlet only clear pink.

DOUBLOONS—(Plant Pat.) A beautiful yellow climber—similar to Golden Climber.

DR. W. VAN FLEET—Early flesh-pink large flowers of rare beauty—and excellent foliage plant.

EXCELSA—Scarlet double flowers in large clusters—improvement over crimson Rambler.

LOS ANGELES CLIMBER—(H. T.) Sport of the bush rose.

MME. ED. HERRIOT CLIMBER—(H.T.) Starts the rose show each year with a glorious coral red and salmon display.

GOLDEN CLIMBER—(Plant Pat.) See illustration below.

MME. GREGOIRE STAEHELIN—(Spanish Beauty Climber)—Long pointed buds of crimson open to large urn shaped flowers of iridescent pearl pink—an arbor or trellis covered with this rose is a most beautiful sight.

NEW DAWN—(Plant Pat.) Everblooming sport of the old favorite Dr. Van Fleet.

PAUL'S SCARLET CLIMBER—Large vivid scarlet flowers in clusters upon a trellis or over the garage this is the greatest display of fireworks plants can produce.

PAUL'S LEMON PILLAR—Large long lemon white blooms of rare beauty.

KITTY KININMONTH—Glowing pink—large flower. Dr. J. Horace McFarland says in Proof of Pudding "At Breeze Hill we are just about willing to consider it the finest fall climber."



© 1932

PLANT PATENT NO. 10

BLAZE (Plant Patent No. 10)

Acclaimed by the nation as the most popular of all New Climbing Roses. It is the very first hardy scarlet climber to be everblooming. Blaze has every quality to enchant Rose-lovers—brilliant color, profusion of bloom, vigor and hardiness.

SHRUB ROSES

Used in the shrub border and in various landscape situations, shrub roses create striking pictures.

AUSTRIAN COPPER—Copper red and golden yellow—a color so vivid, a group of this rose will almost set a forest fire.

F. J. GROOTENDORST—Crimson flowers ruffled like small carnations come in clusters all summer—grows three to four foot, dark green rugosa foliage. A good flowering hedge plant.

HUGONIS—(The Golden Rose of China)—Graceful arching branches covered early in the season with single golden yellow flowers. Delicate lacy foliage makes Hugonis valuable as a large shrub.



© 1933

PLANT PATENT NO. 28

GOLDEN CLIMBER (Plant Pat. No. 28)
Very ornamental new yellow climber, Hybrid Tea, buds flecked with orange scarlet, stems 18 inches long. Hardy, vigorous, very striking appearance, excellent for cutting.

FREE

A beautiful Rose booklet "ALL ABOUT THE NEW ROSES" Contains twenty-four (24) pages. Shows 16 lovely pictures in natural colors.

Expert information on when and how to plant roses and their care. How to start a rose garden.

The booklet FREE with an order for six or more rose bushes.

For Prices see pink pages at back of catalogue.



© 1932

PLANT PATENT
NO. 8

ROSE, MARY HART *U. S. Plant Patent No. 8*

A most unique and striking red sport of Talisman. Bud is maroon-red, opening to well-formed blossoms of deep, velvety blood-red with overflow of amber. Unlike most red Roses, Mary Hart does not wilt or dry when cut, but opens perfectly. It equals, or is better than Talisman as a producer, with sturdier, heavier stems, and is a strong grower. Mary Hart is a Rose all Rose-lovers will want in their garden.

For Prices see pink pages at back of catalogue.

PEONIES

Peonies furnish one of the grandest floral displays of the garden year, and a wealth of bloom for Decoration Day.

Improved varieties developed by hybridizers in recent years, have greatly raised the standard over the 'piney' of grandmother's day.

New varieties also have extended the blossom period to cover the most pleasurable garden season, early summer.

Attractive foliage makes the peony a fine hedge plant as well as garden specimen.

Peonies are usually planted in the fall. However roots dug and divided in the fall, with special storage facilities, can be successfully planted in the spring. C. & O. thrifty peony divisions are now available in both seasons.

BARONESS SCHROEDER—Buds are a delicate pink, opening to very large fragrant blossoms, late.

DUCHESS d' Orleans—Light pink, salmon shaded center, early.

DUKE OF WELLINGTON—Guard petals white, center creamy white. Midseason.

EDULIS SUPERBA—Pink, a good early cutting peony.

DUCHESS DE NEMOURS—White center, creamy white, early.

FELIX CROUSSE—Brilliant red. Old favorite, midseason.

FESTIVA MAXIMA—A grand white peony, center flecked with crimson, early.

FLORAL TREASURE—Pink with delicate shading, fine for cutting, early.

GINETTE—Flesh-pink, salmon tints, fragrant. Midseason.

GOLDEN HARVEST—Richly colored, salmon and pink, early.

JAMES KELWAY—Flesh pink, very fragrant, midseason.

LA FRANCE—Apple blossom pink, very large and fragrant, rates among the best, late midseason.

LAMARTINE—Old rose pink, violet shadings, late.

L'ECLATANTE—Deep velvety crimson, fragrant, midseason.

MARY BRAND—An outstanding deep crimson, midseason.

MONS. MARTIN CAHOZAC—The darkest red peony, a deep garnet red, midseason.

MONS. JULES ELIE—Shell pink, fragrant, very large, one of the most beautiful peonies, early, midseason.

MME. DE VERNEVILLE—White, center carmine tracing, mid-season.

OFFICINALIS ROSEA—The old 'piney' of grandmother's time

HICINALIS RUBRA—Dark red, very early.

PRIMAVERE—Sulphur yellow—cut in the bud and allow it to open in the basement for best color. Midseason.

RICHARD CARVEL—The best of all early reds.

RUBRA SUPERBA—Very late, dark red.

VAN DYKE—A multi-colored peony, pink-salmon and gold.

WALTER FAXON—Immense clear pink, one of the finest pink peonies.

In our perennial gardens we grow the more important varieties of garden perennials including 100 choice Iris and a fine collection of hardy chrysanthemums, featuring some of the fine new early mums. Our choice collection of rock garden plants include many dwarf evergreen sorts, with attractive foliage and brilliant flowers at various times throughout the seasons. Our perennial list will be sent on request.



© 1934

PLANT PATENT NO. 87

NIGRETTE (Plant Pat. No. 87) The Black Rose of Sangerhausen. Intense deep maroon with blackish velvety sheen. The darkest of all roses. Continuous bloomer. Delightfully fragrant—very attractive.



© 1934

PLANT PATENT NO. 95

TOKEN (Plant Pat. No. 95)

Full double flowers, a glowing orange. Large Ophelia shaped bud. Free bloomer, flowers lasting. Glossy foliage. Is disease resistant.

For Prices see pink pages at back of catalogue.

PRICE LIST

WE PAY FREIGHT CHARGES (EVERGREENS AND OTHER ITEMS AS SPECIFIED IN OUR CATALOGUE EXCEPTED) TO ANY SHIPPING POINT WITHIN THE U. S. A. ON SMALL SHIPMENTS OF \$3.00 OR OVER WE PAY EXPRESS OR MAIL CHARGES (EVERGREENS AND OTHER ITEMS AS SPECIFIED IN OUR CATALOGUE EXCEPTED) TO SHIPPING POINTS IN THE PACIFIC NORTHWEST, OR HALF THE EXPRESS OR MAIL CHARGES ELSEWHERE IN THE U. S. A. This Supersedes All Previous Lists.

Apple	except RICHARED DELICIOUS, SHOTWELL DELICIOUS, BLACKJON, BLAXTAYMAN, BLACKMACK, SEEANDO RED ROME, SEEANDO WINESAP		Dz.-lots 25-lots 50-lots 100-lots				
	Grade	Ex. Select	Each	Each	Each	Each	Each
	4-6 ft.		.75	.60	.50	.45	.40
	3-4 ft.		.70	.55	.45	.40	.35
	5-7 ft.		.80	.65	.55	.50	.45
RICHARED DELICIOUS (Trade Mark Reg.)	4-6 ft.		.90	.75	.65	.60	.55
SHOTWELL DELICIOUS (U. S. Plant Pat. No. 90)							
BLACKJON (Trade Mark Reg.)	3-4 ft.		.85	.70	.60	.55	.50
BLAXTAYMAN (Trade Mark Reg.)							
BLACKMACK (Trade Mark Reg.)	5-7 ft.	Ex. Select Grade	1.00	.80	.70	.65	.60
SEEANDO RED ROME (Trade Mark Reg.)	4-6 ft.	Ex. Select Grade	.80	.65	.55	.50	.45
SEEANDO WINESAP (Trade Mark Reg.)							
	3-4 ft.		.75	.60	.50	.45	.40
	5-7 ft.		.85	.70	.60	.55	.50
Peach, Pear, Nectarine, Plum, Prune, Apricot (except Candoka, Halehaven, Rio Oso Gem and Redelberta Peaches, Riland Apricots, and Early Italian Prune)	4-6 ft.		.75	.60	.50	.45	.40
	3-4 ft.		.70	.55	.45	.40	.35
	5-7 ft.	Ex. Select Grade	.85	.65	.55	.50	.45
HALEHAVEN PEACH	4-6 ft.	Ex. Select Grade	.80	.65	.55	.50	.45
EARLY ITALIAN PRUNE							
	3-4 ft.		.75	.60	.50	.45	.40
	5-7 ft.		.85	.70	.60	.55	.50
CANDOKA PEACH (U. S. Plant Pat. No. 51)	4-6 ft.		1.00	.80	.65	.60	.55
RIO OSO GEM PEACH (U. S. Plant Pat. No. 80)							
REDELBERTA (U. S. Plant Patent No. 232)	3-4 ft.		.90	.75	.60	.55	.50
RILAND APRICOT (U. S. Plant Pat. No. 74)							
	5-7 ft.	Ex. Select Grade	1.10	.85	.70	.65	.60
Cherry, Sweet	4-6 ft.		.90	.75	.65	.60	.55
	3-4 ft.		.80	.65	.55	.50	.45
	5-7 ft.	Select Grade	1.00	.85	.70	.65	.60
Cherry, Sour	3½-5 ft.		.85	.75	.65	.60	.55
	3 ft. up		.75	.65	.55	.50	.45
	4-6 ft.	Select Grade	1.00	.85	.70	.65	.60
ALMOND	4-6 ft.		1.00	.85	.65	.60	.55
AND QUINCE							
	3-4 ft.		.85	.65	.55	.50	.45

500 trees take 5 per cent discount from 100 rate

1000 trees take 10 per cent discount from 100 rate

Ask for special prices on large quantities.

The QUANTITY RATE on FRUIT TREES, applies to the total number of all trees in order. Example—"6 Apple, 4 Peach, 2 Pear" take the "dozen" rate, or "25 Apple, 25 Pear," take the "50" rate, etc.

FREE STOCK AND DISCOUNTS FOR ALL CASH WITH ORDERS

This free stock and discount applies only on orders given at least 30 days before shipping date.

On orders up to \$50.00 where ALL CASH is paid with the order, we allow additional free stock to the amount of 10% of the amount of the order. This free stock must be of some other class than that of the order. For example, if the order is for fruit trees, then the free stock must be shade trees, grape vines, berry plants, shrubs, roses, etc. On orders for over \$50.00 a cash discount for all cash with order is allowed as follows: Stock sold at the 100 rate, 5 per cent; at the 500 rate, 3 per cent; 1,000 rate, 2 per cent.

PARCEL POST SHIPMENTS. It is often necessary to cut back tops of trees to comply with parcel post regulations for maximum measurement of parcels. This does not injure the trees as tops should be cut back when planting.

Prices subject to change without notice.

If you live in the State of Washington, add 2 per cent State Sales Tax on all Landscape material.

	Each	Dz-lots Each	25-lots Each	50-lots Each	100-lots Each	1000-lots Each
GRAPE, Concord35	.30	.25	.20	.15	.12½
Caco, Fredonia, Portland50	.47½	.45	.40	.35	
Other Varieties40	.35	.30	.25	.20	.15
Above prices for 2 year No. 1 vines. Orders for 100 or more 1 year, No. 1 grape vines, 20% discount from above prices.						
CURRENT, Perfection (Sold In State) ..	.40	.35	.30	.25	.20	.16
Other Varieties (of Wash. Only) ..	.35	.30	.25	.20	.15	.12½
GOOSEBERRY,						
Oregon Champion (Sold In State) ..	.35	.30	.25	.20	.15	.12½
Other Varieties ... (of Wash. Only) ..	.40	.35	.30	.25	.20	.16
YOUNGBERRY and BOYSENBERRY35	.30	.25	.20	.15	.12½
RASPBERRY		Doz.	25	50	100	1000-lots-ea.
Columbian, St. Regis, Golden						
Queen, Latham and Chief	2.50	4.00	7.00	12.00		.08
Other Varieties	2.00	3.50	6.00	10.00		.06½
BLACKBERRY,						
Thornless	3.50	7.00	12.50	20.00		.15
Other Varieties	2.50	4.00	7.00	12.00		.08
DEWBERRY AND LOGANBERRY	2.50	4.00	7.00	12.00		.08
STRAWBERRY,						
Everbearing Varieties		1.00	1.50	2.50		15.00
Standard Varieties75	1.25	2.00		10.00

Combination Apple Trees

	Each
Winter Banana, Yellow Transparent, Red Gravenstein, Delicious, King	\$3.00
Winter Banana, Red Gravenstein, Delicious, Yellow Transparent	2.75
Winter Banana, Delicious, Red Gravenstein, King	2.75
Winter Banana, Yellow Transparent, Delicious, King	2.75
Delicious, Red Gravenstein, King	2.50
Winter Banana, Red Gravenstein, King	2.50
King, Delicious, Yellow Transparent, Red Gravenstein	2.50
Winter Banana, King, Yellow Transparent, Red Gravenstein	2.75
Winter Banana, Red Gravenstein, Yellow Transparent	2.50

Combination Cherry Trees

	Each
Tartarian, Bing	2.50
Tartarian, Royal Ann, Lambert	3.00
Tartarian, Bing, Lambert	3.00
Tartarian, Bing, Royal Ann, Lambert	\$3.50
Tartarian, Lambert	2.50
Bing, Lambert	2.50
Royal Ann, Lambert, Bing	3.00

Miscellaneous

	Each	Dozen	50	100	1000
Rhubarb	\$.30	\$3.50	\$8.00	\$15.00	
Horseradish15	1.50	6.00	10.00	
Asparagus75	1.75	3.00	\$15.00
Hop Vines35	3.50			

NUTS

	Each	Dozen
BLACK WALNUT (American)	3-4 ft. \$1.00	\$10.00
"	4-6 ft. 1.25	12.50
"	6-8 ft. 1.50	15.00
BLACK WALNUT, (Thomas-Grafted)	3-4 ft. 2.00	20.00
" (Stabler-Grafted)	4-6 ft. 2.50	25.00
"	6-8 ft. 3.00	30.00
BUTTERNUT or WHITE WALNUT	6-8 ft. 1.75	17.50
ENGLISH WALNUT (From Seed)	3-4 ft. 1.00	10.00
"	4-6 ft. 1.25	12.50
"	6-8 ft. 1.50	15.00
ENGLISH WALNUT (Grafted)	3-4 ft. 1.50	15.00
"	4-6 ft. 2.00	20.00
"	6-8 ft. 2.50	25.00
ENGLISH WALNUT (SecandO Grafted)	3-4 ft. 2.00	20.00
"	4-6 ft. 2.50	25.00
"	6-8 ft. 3.00	30.00
FILBERT	2-3 ft. .75	7.50
"	3-4 ft. .85	8.50
"	4-6 ft. 1.00	10.00
CHESTNUT (American Sweet)	4-6 ft. 1.50	15.00
"	6-8 ft. 1.75	17.50
CHESTNUT (Spanish or Italian)	3-4 ft. 1.50	15.00
"	4-6 ft. 1.75	17.50
HICKORY	2-3 ft. 1.50	15.00
PECAN (budded)	2-3 ft. 2.50	25.00

Combination Varieties Fruit Trees

We offer Novelty fruit trees with from three to five different varieties—each limb a different variety. These fruits ripen from summer to late fall, *all high grade and popular varieties.*

Home owners and tree lovers will find these combination trees a never-ending source of interest and delight. For the home owner, an assortment of these trees puts a whole “home orchard” on the small space of ground. Imagine beautiful red, yellow, and other brilliantly-colored apples all on one tree; also different kinds of fruits on a single tree!

ORDER BY NUMBER

COMBINATION APPLE TREES

	Each
No. 1. Red Gravenstein, Delicious, Duchess, Yellow Transparent, McIntosh	\$3.00
2. Red Gravenstein, Delicious, Yellow Transparent, McIntosh	2.75
3. Delicious, Duchess, Yellow Transparent, McIntosh	2.75
4. Red Gravenstein, Delicious, Duchess, McIntosh	2.75
5. Red Gravenstein, Duchess, Yellow Transparent, McIntosh	2.75
6. Red Gravenstein, Delicious, Duchess, Yellow Transparent	2.75
7. Red Gravenstein, Delicious, Duchess	2.50
8. Red Gravenstein, Duchess, Yellow Transparent	2.50
9. Delicious, Duchess, Yellow Transparent	2.50
10. Red Gravenstein, Delicious, McIntosh	2.50
11. Delicious, Duchess, McIntosh	2.50
12. Duchess, Yellow Transparent, McIntosh	2.50
13. Yellow Transparent, Red Gravenstein	2.25
14. Delicious, Red Gravenstein	2.25
15. Duchess, McIntosh	2.25
16. Red Gravenstein, McIntosh	2.25
17. Red Gravenstein, Duchess	2.25
18. Yellow Transparent, Duchess	2.25

COMBINATION PEACH TREES

No. 19. J. H. Hale, Golden Jubilee, Elberta, Slappy, Rochester	3.00
20. J. H. Hale, Golden Jubilee, Elberta, Rochester	2.75
21. Golden Jubilee, Elberta, Slappy, Rochester	2.75
22. J. H. Hale, Elberta, Slappy, Rochester	2.75
23. J. H. Hale, Golden Jubilee, Slappy, Rochester	2.75
24. J. H. Hale, Golden Jubilee, Elberta, Slappy	2.75
25. J. H. Hale, Golden Jubilee, Rochester	2.50
26. J. H. Hale, Elberta, Rochester	2.50
27. J. H. Hale, Slappy, Rochester	2.50
28. Golden Jubilee, Slappy, Rochester	2.50
29. Golden Jubilee, Elberta, Rochester	2.50
30. Golden Jubilee, Elberta, Slappy	2.50
31. J. H. Hale, Golden Jubilee, Elberta	2.50
32. J. H. Hale, Elberta, Slappy	2.50
33. J. H. Hale, Golden Jubilee, Slappy	2.50

COMBINATION PLUM AND PRUNE TREES

No. 34. Double X French, Imperial Gage, Damson, Yellow Egg, Italian	3.00
35. Double X French, Imperial Gage, Damson, Yellow Egg	2.75
36. Imperial Gage, Damson, Yellow Egg, Italian	2.75
37. Double X French, Imperial Gage, Yellow Egg, Italian	2.75
38. Double X French, Damson, Yellow Egg, Italian	2.75
39. Double X French, Imperial Gage, Damson, Italian	2.75
40. Double X French, Damson, Italian	2.50
41. Double X French, Imperial Gage, Italian	2.50

42. Double X French, Damson, Yellow Egg	2.50
43. Damson, Yellow Egg, Italian	2.50
44. Double X French, Yellow Egg, Italian	2.50
45. Imperial Gage, Damson, Italian	2.50
46. Double X French, Imperial Gage, Damson	2.50
47. Double X French, Damson	2.25
48. Damson, Italian	2.25
49. Double X French, Italian	2.25
50. Imperial Gage, Damson	2.25
51. Imperial Gage, Yellow Egg	2.25

COMBINATION PEAR

No. 52. Bartlett, Anjou, Flemish Beauty, Buerre Easter, Clapp's Favorite	3.00
53. Bartlett, Anjou, Flemish Beauty, Bosc, Buerre Easter	3.00
54. Flemish Beauty, Clapp's Favorite, Anjou, Buerre Easter	2.75
55. Anjou, Flemish Beauty, Bartlett, Clapp's Favorite	2.75
56. Flemish Beauty, Clapp's Favorite, Bartlett, Bosc	2.75
57. Flemish Beauty, Bosc, Bartlett, Buerre Easter	2.75
58. Flemish Beauty, Bartlett, Anjou, Bosc	2.75
59. Flemish Beauty, Bartlett, Clapp's Favorite, Buerre Easter	2.75
60. Anjou, Flemish Beauty, Bosc	2.50
61. Anjou, Flemish Beauty, Buerre Easter	2.50
62. Anjou, Flemish Beauty, Bartlett	2.50
63. Anjou, Flemish Beauty, Bartlett	2.50
64. Flemish Beauty, Bosc, Clapp's Favorite	2.25
65. Flemish Beauty, Buerre Easter	2.25
66. Flemish Beauty, Anjou	2.25

COMBINATION MISCELLANEOUS VARIETIES

No. 67. Italian Prune, Peach Plum, Boston Red Nectarine, Rochester Peach	3.00
68. Italian Prune, Boston Red Nectarine, Rochester Peach, Wenatchee Apricot	3.00
69. Italian Prune, Peach Plum, Boston Red Nectarine, Wenatchee Apricot	3.00
70. Italian Prune, Peach Plum, Rochester Peach, Wenatchee Apricot	2.75
71. Italian Prune, Peach Plum, Wenatchee Apricot	2.75
72. Italian Prune, Rochester Peach, Wenatchee Apricot	2.75
73. Italian Prune, Peach Plum, Boston Red Nectarine	2.75
74. Italian Prune, Boston Red Nectarine, Rochester Peach	2.75
75. Italian Prune, Peach Plum, Rochester Peach	2.75
76. Peach Plum, Rochester Peach, Wenatchee Apricot	2.75
77. Peach Plum, Wenatchee Apricot	2.50
78. Rochester Peach, Wenatchee Apricot	2.50
79. Rochester Peach, Italian Prune	2.50
80. Wenatchee Apricot, Italian Prune	2.50
81. Peach Plum, Italian Prune	2.50

When ordering any of these trees, also give a second choice as trees of certain varieties are very limited.



FLOWERING SHRUBS

Our shrubs are No. 1 grade and at least two years old. They have been transplanted and have excellent root systems and symmetrical tops. most of this stock will blossom the first year, if it is planted early.

QUANTITY RATE DISCOUNT

Shrubs and Vines, Dozen rate is one-sixth less than each rate.

Example—A shrub costing 75c—1 dozen, \$7.50.

ALTHEA, either red, pink or white	1.00
ALMOND, either pink or white	.85
BARBERRY, Thunburgi	.50
Dwarf Box	.50
Red Leaved	.75
Tru hedge Columberry	.60
BEAUTY BUSH (Kolkwitzia)	1.00
BUTTERFLY BUSH (Buddleia)	.75
BUTTON BUSH	.75
CALYCANTHUS	.85
CLETHRA (Sweet Pepper Bush)	.50
CORAL BERRY	.60
DEUTZIA, C. Rosea	.75
Gracillis	.75
Lemoine	.75
Pride of Rochester	.75
DOGWOOD, Lutea (Yellow Twig)	.75
Siberica (Redtwig)	.75
Elegantissima (Variegated leaves)	.85
EUONYMUS, Alatus	.75
FORSYTHIA, Fortuni, Intermedia, and Suspensa	.75
HONEYSUCKLE (bush) Fragrantissima	.75
Tatarican bush, white, pink, and red	.75
HYDRANGEA, Arborescens, also P. G.	.75
JETBEAD	.75
KERRIA, Japonica	.75
LILAC, Purple, white	.75
Persian and Rothomogensis	1.00
Budded varieties (viz)	
Chas. Joy, Chas. X, Marie LeGraye, Ludwig	
Spaeth, Michael Buchner, Pres. Grevy	1.25
MOCK ORANGE (Philadelphus) All varieties, viz.	
Corbnarius, Grandiflora, Virginal, Lemoine	.75
NINEBARK (Golden Spirea)	.75
PRUNUS, Triloba	1.00
QUINCE, Japan, Flowering	.85
Dwarf	.75
SNOWBALL (Viburnum Sterilis)	.85
SNOWBERRY	.75
SPIREA, all varieties, viz	
Anthony Waterer, Thunburgi, Arguta, Billardi,	
Prunifolia, Van Houtti, and Sorbaria	.75
STEPHENANDRA	.75
SUMAC, Cutleaf, also Staghorn	1.00
TAMARIX, Africana, Hispida, Odessana	.75
VIBURNUM, Carlesi	1.50
Dentatum, Lantana, Opulus (H. B. C.)	.85
Plicatum, Tomentosum	.85
WEIGELIA, All varieties	
Eva Rathke, Rosea, Floribunda and Variegated	.75

SHRUBS, Balled and Burlapped, F. O. B. WENATCHEE

AZALEA, Mollis	1.50
COTONEASTER, Acutifolia, also Simonsi	1.25
DOGWOOD (Cornus) Florida	1.25
Florida Rubra (grafted)	2.50
MAPLE (Acer) Redleaf Japan	3.00
Cutleaf, Japan	3.00

HEDGE PLANTS

	Size	25	50	100
ARBORVITAE, American		\$10.00	\$18.75	\$35.00
Norway Spruce		10.00	18.75	35.00
BARBERRY, Thun		5.00	8.00	15.00
" Tru hedge		10.00	18.75	35.00
" Red Leaved		10.00	18.75	35.00
PRIVET, English	18-24 in.	4.00	7.00	12.50
" "	2-3 ft.	5.00	8.50	15.00
" "	3-4 ft.	7.00	12.00	22.00
" Lodense		5.00	9.00	17.00
SPIREA, Van Houtti		5.00	8.00	15.00
CARAGANA (Siberian Pea Tree)		3.25	6.00	10.00

Above plants all No. 1 Hedging Grade except where noted.

VINES AND CREEPERS

Our Vines and Creepers are all 2 or more years of age,

No. 1 grade.

Dozen rate one-sixth less than each rate.

CELASTRUS, Scandens (American Bittersweet)	\$1.00
CLEMATIS, Jackmani	1.25
Paniculata (Japan)	.75
Ramona	.75
DUTCHMAN'S PIPE	.75
HONEYSUCKLE, Dutch Fragrant	.75
Scarlet Trumpet	.75
Hall's Japan	.75
MATRIMONY VINE	.75
TRUMPET VINE (Bignonia)	.75
IVY, Boston or Japan, Engelmann	.75
VIRGINIA CREEPER	.75
WISTERIA, Blue, White	1.00
EUONYMUS RADICANS VEGETUS	1.00
EUONYMUS RADICANS VARIEGATED	1.00
WISTERIA, Long cluster (grafted)	1.75

SHADE and ORNAMENTAL TREES

Quantity Rate—Shade and Ornamental Trees—Dozen rate is one-sixth less than the each rate. The 100 rate is one-fourth less than the each rate. 12 to 49 at the dozen rate; 50 take the 100 rate. Example: If a shade tree costs \$1.25, one dozen costs \$12.50 and one hundred \$93.75.

AILANTHUS (Tree of Heaven)	6-8 ft.	\$1.00
"	8-10 ft.	1.25
ASH, White	6-8 ft.	1.25
"	8-10 ft.	1.50
BIRCH, European White	5-6 ft.	1.00
"	6-8 ft.	1.25
"	8-10 ft.	1.50
BOX-ELDER	6-8 ft.	1.00
"	8-10 ft.	1.25
Silver, variegated	6-7 ft.	2.00
CATALPA SPECIOSA (Western Catalpa)	6-8 ft.	1.00
"	8-10 ft.	1.25
CATALPA BUNGEI (Umbrella Catalpa)	5-6 ft.	2.50
and 6-7 ft. stems		
CHESTNUT, American, also European	5-6 ft.	1.50
"	6-8 ft.	1.75
CHERRY, Flowering (Kwanzan)	3-4 ft.	1.00
"	4-5 ft.	1.25
CRAB, Flowering Bechtels	2-3 ft.	.75
"	4-5 ft.	1.25
Floribunda, Japan	4-5 ft.	1.25
"	5-6 ft.	1.50
Carmine (Atrosanguinea)	4-5 ft.	1.25
"	5-6 ft.	1.50
Scheideckeri	4-5 ft.	1.25
"	5-6 ft.	1.50
Sargents (dwarf)	2-3 ft.	1.25
ELM, American	6-8 ft.	1.00
"	8-10 ft.	1.50
Cork Bark	4-5 ft.	1.50
Mo'ine	6-8 ft.	1.25
Vase	6-8 ft.	1.25
Siberian or Chinese	5-6 ft.	.75
"	6-8 ft.	1.00
"	8-10 ft.	1.25
"	10-12 ft.	1.75
GINKGO BILOBA (Maidenhair Tree)	4-5 ft.	\$2.00
HAWTHORN, Paul's Scarlet	6-8 ft.	1.75
"	8-10 ft.	2.25
HORSECHESTNUT, White Flowering	3-4 ft.	1.25
"	4-5 ft.	1.50
"	5-6 ft.	2.00
"	6-8 ft.	2.50
Pink Flowering	4-5 ft.	2.50
"	5-6 ft.	3.00
"	6-8 ft.	4.00
LINDEN, American (Basswood)	6-8 ft.	1.50
"	8-10 ft.	1.75
European	5-6 ft.	1.50
"	6-8 ft.	1.75

Prices subject to change without notice.

If you live in the State of Washington, add 2 per cent State Sales Tax on all Landscape material.

SHADE and ORNAMENTAL TREES---Continued

	Each	
LOCUST, Black	5-6 ft.	.60
"	6-8 ft.	.75
"	8-10 ft.	1.00
"	10-12 ft.	1.50
"	Cal. 2-2½ in.	2.25
Globe	6-7 ft. stems	2.00
"	Caliper 1-1¼ in.	2.00
"	Caliper 1¼-2 in.	2.50
"	2-3 ft.	3.50
Honey	6-8 ft.	1.00
"	8-10 ft.	1.50
(Thornless)	8-10 ft.	1.75
"	10-12 ft.	2.25
Rose or Most	5-6 ft. head	2.50
Pink Flowering	6-8 ft.	1.75
"	8-10 ft.	2.00
Maple, Norway	5-6 ft.	1.00
"	6-8 ft.	1.25
"	8-10 ft.	1.50
"	10-12 ft.	1.75
"	Caliper 1½-2 in.	2.50
Red (Acer Rubrum)	5-6 ft.	1.25
"	6-8 ft.	1.75
"	8-10 ft.	2.25
Schwedleri	6-8 ft.	1.50
"	8-10 ft.	1.75
"	10-12 ft.	2.25
Silver (or Soft)	6-8 ft.	1.00
"	8-10 ft.	1.25
Sugar	5-6 ft.	1.25
"	6-8 ft.	1.75
Sycamore	6-8 ft.	1.00
"	8-10 ft.	1.50
Japan, Red Leaf	2-3 ft.	3.00
Cutleaf Red, Japan	18-24 in.	3.00
Mountain Ash, European	5-6 ft.	1.25
"	6-8 ft.	1.50
MULBERRY, Russian	6-8 ft.	1.25
"	8-10 ft.	1.50
American	6-8 ft.	1.25
OAK, Red	5-6 ft.	1.50
Pin	5-6 ft.	1.50
POPULAR, Carolina and Lombardy	5-6 ft.	.50
"	6-8 ft.	.75
"	8-10 ft.	1.00
"	10-12 ft.	1.50
PRUNUS, Bleriana, Cistena, Camelliaflore,		
Davidiana and Triloba	3-4 ft.	1.00
"	4-5 ft.	1.25
RUSSIAN OLIVE	5-6 ft.	1.00
"	6-8 ft.	1.25
RED BUD	5-6 ft.	1.25
SIBERIAN PEA (Caragana)	6-8 ft.	1.00
SYCAMORE (European Plane)	6-8 ft.	1.50
"	8-10 ft.	1.75
(American Plane)	6-8 ft.	1.50
"	8-10 ft.	1.75
TULIP TREE (Liriodendron)	5-6 ft.	1.50
WILLOW, Golden	5-6 ft.	.75
"	6-8 ft.	1.00

WEeping TREES

BIRCH, Cutleaf	5-6 ft.	1.50
"	6-8 ft.	2.00
"	8-10 ft.	2.50
ELM, Camperdown	6 ft. heads	2.50
CHERRY, Japanese Flowering (double)	6 ft. heads	2.75
MULBERRY	5-6 ft. hd.	2.50
PEACH, Flowering	6 ft. head	2.50
WILLOW, Niobe	6-8 ft.	1.00
"	8-10 ft.	1.25
Wisconsin	5-6 ft.	.75
"	6-8 ft.	1.00
"	8-10 ft.	1.25

"You have furnished me with the best trees I have ever planted." --- Paonia, Colorado

Prices subject to change without notice.

If you live in the State of Washington, add 2 per cent State Sales Tax on all Landscape material.

EVERGREENS

Arborvitae . . . (Thuja)	AMERICAN	2½-3 ft.	\$1.75
	"	3-4 ft.	2.50
	"	4-5 ft.	3.25
	BERCKMANS GOLDEN	12-15 in.	1.50
	"	15-18 in.	2.00
	LOBI AUREA	3½-4 ft.	3.25
	ORIENTALLIS, DALY NANA	18-24 in.	1.75
	BEVERLYENSIS	3½-4 ft.	3.50
	ORIENTAL	2½-3 ft.	2.25
	"	3-4 ft.	3.00
	"	4-5 ft.	4.00
	"	5-6 ft.	5.00
	PYRAMIDALIS	2½-3 ft.	2.25
	"	3-4 ft.	3.00
	"	4-5 ft.	3.75
	"	5-6 ft.	5.00
"	6-7 ft.	6.50	
DOUGLAS SPIRILIS	2½-3 ft.	2.25	
"	3-4 ft.	3.00	
TOM THUMB, Trimmed Globe	15-18 in.	1.75	
"	18-24 in.	2.50	
THUJA GLOBOSA	15-18 in.	1.50	
"	18-24 in.	2.00	
Fir (Abies) . .	CONCOLOR (Silver Fir)	3-4 ft.	3.00
	"	4-5 ft.	4.00
	"	5-6 ft.	5.00
Juniper	ANDORA PLUMOSA	18-24 in.	2.00
	CANADENSIS	24-30 in.	2.50
	CHINESE UPRIGHT MASCULA	3-4 ft.	3.00
	COAST OF MAINE	18-24 in.	2.25
	IRISH	3-4 ft.	2.50
	PFITZER	18-24 in.	2.00
	"	24-30 in.	2.75
	REEVES	18-24 in.	2.00
	"	24-30 in.	2.75
	SABINA	18-24 in.	2.00
	SCOPULORUM	2½-3 ft.	3.00
	SPINY CREEK	15-18 in.	1.50
	TAMARISCIFOLIA	15-18 in.	1.75
	"	18-24 in.	2.25
	VIRGINIANA (Eastern Red Cedar)	2½-3 ft.	2.50
	"	3-4 ft.	3.25
"	4-5 ft.	4.00	
"	Specimens 5-6 and up	6.00 and up	
VON EHRON	2½-3 ft.	3.00	
WAUKEGAN	18-24 in.	2.25	
Pinus	AUSTRIAN PINE	3-4 ft.	2.50
	"	Specimens 4-10 ft.	3.00 to 8.00
	SCOTCH PINE	3-4 ft.	2.50
	"	Specimens 4-10 ft.	3.00 to 8.00
	MUGHO PINE	15-18 in.	1.75
"	18-24 in.	2.50	
TANYOSHA GLOBOSA	18-24 in.	4.00	
Retinospora . .	FILIFERA, NANA AUREA	15-18 in.	1.75
	"	2-3 ft.	3.00
	PISIFERA	3-4 ft.	3.00
	"	4-5 ft.	3.75
	PLUMOSA	3-4 ft.	3.00
	"	4-5 ft.	4.00
RETINOSPORA OBTUSA (Hinoka Cypress)			
(Not hardy in severe climates)	3-4 ft.	4.00	
"	4-5 ft.	6.00	
Spruce	COLORADO BLUE	2-2½ ft.	3.00
	"	2½-3 ft.	4.00
	"	3-4 ft.	6.00
	"	5-6 ft.	7.50
	COLORADO GREEN	3-4 ft.	3.00
	"	4-5 ft.	4.00
	KOSTER'S BLUE	2½-3 ft.	6.00
	"	3-4 ft.	8.00
	NORWAY	2½-3 ft.	1.75
"	3-4 ft.	2.50	
"	4-5 ft.	3.25	
"	5-6 ft.	4.25	
Broad Leaf Evergreens . .	BERBERIS VERRUCULOSA	12-15 in.	1.25
	COTONEASTER HORIZONTALIS	18-24 in.	1.25
	DAPHNE CNEORUM	8-10 in. spread	1.00
	ILEX CRENATA (Japanese Holly)	24-30 in.	1.50
	MAHONIA (Oregon Grape)	15-18 in.	1.00
	"	18-24 in.	1.50
	PYRACANTHA LALANDI (Firethorne)	2-3 ft.	1.50
"	3-4 ft.	1.75	
YUCCA		.75	
Variegated		.75	

ROSES AND MISCELLANEOUS

FOLLOWING 2 YEAR NO. 1 PLANTS, BOTH BUSH AND CLIMBERS

60c Each—Dozen Rate .50 Each—100 Rate One-Fourth Less Than Each Rate

American Beauty.	Frau K. Druschki.	Los Angeles.
Angele Pernet.	Golden Ophelia.	Mme. Butterfly.
Betty Uprichard.	Golden Dawn.	Mme. Edouard Herriott.
Caledonia.	Grus An Teplitz.	Miss Rowena Thom.
Dame Edith Helen.	Hoosier Beauty.	Mrs. Pierre S. Du Pont.
Etoile De Holland.	Irish Fireflame.	Mrs. E. P. Thom.
Editor McFarland.	Joannah Hill.	President Hoover.
E. G. Hill.	Kaiserin A. Victoria.	Sunburst.
Feu Joseph Looymans.		Talisman.

ROSES, CLIMBING VARIETIES

American Beauty.	Excelsa.	Mme. G. Staechelin.
Chaplin's Pink.	Los Angeles.	Paul's Lemon Pillar.
Dr. W. Van Fleet.	Mme. Herriott.	

SHRUB ROSES

Austrian Copper.	F. J. Grootendorst.	Hugonis.
------------------	---------------------	----------

PLANT PATENTED AND NOVELTY ROSES

Plant Patented (P. P.) Varieties—3 of a variety at dozen rate, or 1-6 less than each rate.

Other Varieties, 12 for Price of 10

	Each		Each
Alezane (P. P.)	\$1.50	Golden Climber (P. P.)	1.00
Anne Poulsen (P. P.)	1.00	May Wettern	.75
Blaze Climber (P. P.)	1.00	Mary Hart (P. P.)	1.00
Cecil	.75	Matador (P. P.)	1.25
Courtes Vandal (P. P.)	1.00	Mme. C. Chambard	.75
Director Rubio	.75	New Dawn Climber (P. P.)	1.50
Doublons Climber (P. P.)	1.50	Token (P. P.)	1.25
Gloaming (P. P.)	1.25	Wm. Orr	.75
McGredy Ivory	.75	Texas Centennial (P. P.)	1.00
Mrs. Sam McGredy	.75	Queen Alexandra	.75
Soeur Therese	.75		

PEONIES

12 Peonies at the Price of 10 or 1-6 Reduction. Color Class Marked as (W.) White

Barones Schroeder (W.)	.75	La Martine (P.)	1.00
Duchess d' Orleans (P.)	.35	L'Eclatante (R.)	.35
Duke of Wellington (W.)	.35	Mary Brand (R.)	1.50
Edulis Superba (P.)	.35	Mon ^s . Jules Elie (P.)	.75
Duchess De Nemours (W.)	.50	Mons. Martin Cahouza (R.)	1.50
Felix Crousse (R.)	.75	Mme. de Verneville (W.)	.35
Festiva Maxima (W.)	.50	Officinalis Rosea (P.)	.60
Floral Treasure (P.)	.50	Officinalis Rubra (R.)	.60
Ginette (P.)	1.00	Primavere (Y.)	1.50
Golden Harvest (P.)	.50	Richard Carvel (R.)	1.50
James Kelway (P.)	1.00	Rubra Superba (R.)	.50
La France (P.)	2.00	Van Dyke (Multi.)	.60
		Walter Faxon (P.)	2.00

INDEX

	Page
Apples	3-9
Blackjon	4
Blackmack	9
Blaxtayman	7
Richard Delicious	3
SeeandO Red Rome	6
SeeandO Winesap	9
Shotwell Delicious	6
Apricots	8 & 10
Riland	8
Asparagus	30
Blackberries	15
Boysenberry	15
Crab Apples	5
Cherries	11
Currants	15
Dewberries	15
Evergreens	16-17
" (Broadleaf)	17
Fertilizer	22
Gazing Globes	22
Gooseberries	15
Grapes	15
Grass Seed	22
Hedge Plants	21
Hop Vines	30
Horseradish	30
Loganberries	15
Nectarines	11
Nut Trees	12
Ornamental Trees	18-19
Peaches	10-13-14
Candoka	13
Golden Jubilee	14
Rio Oso Gem	14
Pears	10
Peat Moss	22
Peonies	28
Plums	11
PRICE LIST -- See Pink Pages	
Prunes	11
Quinces	11
Raspberries	15
Roses	23-27
Rhubarb	30
Shade Trees	18-19
Shrubs	20-21
Strawberries	15
Tree Protectors	22
Vines	21
Weeping Trees	19
Youngberry	15

GRASS SEED F. O. B. WENATCHEE

"C. & O." LAWN MIXTURE, Per pound	.50
KENTUCKY BLUE GRASS, Per pound	.50
RED TOP, Per pound	.50
WHITE LAWN CLOVER, Per pound	.60
RHODE ISLAND BENT, Per pound	1.50

VIGORO F. O. B. Wenatchee

1 lb. pkg.	10c	25 lb. bag	\$1.40
5 lb. pkg.	45c	50 lb. bag	2.40
10 lb. pkg.	70c	100 lb. bag	3.75

GRANULATED PEAT F. O. B. Wenatchee

Per bag	85c	Per ba'e	\$4.00
---------	-----	----------	--------

(Price subject to change without notice.)

TREE PROTECTORS F. O. B. Wenatchee

18 in. high for small trees

25 or less each	5c	50 to 500 each	3c
25 to 50 each	4c	500 to 1000 each	2½c

For trees up to about 4 inches in diameter prices 1 cent more than above.

GAZING GLOBES, F. O. B. Wenatchee

8 inch globe and pedestal	\$12.00, \$15.00 and up
12 inch globe and pedestal	\$16.00, \$20.00 and up
16 inch globe and pedestal	\$21.00 and up
Pedestals differ in material and design and priced accordingly	
BIRD BATHS on pedestal	\$12.00 and up
SUNDIALS on pedestal	\$30.00 and up

CASH PAID Discoverers Of New Varieties Of Fruits And Plants

Most new fruits and plants are of chance origin. If you have a fruit tree, one limb or twig of which produces fruit noticeably different from that on the remainder of the tree; different in color, shape, size or ripening season, it is a bud sport or muta-

tion as are the Richared Delicious, Shotwe'l Delicious, Blackjon, Blaxtayman, Blackmack, SeeandO Winecap, SeeandO Red Rome; all of which are very superior to the parent varieties.

If a new variety, or a bud sport, has qualities seemingly worthy of introduction, we will cooperate in making careful tests, and if it proves of sufficient merit to warrant cataloging, we will pay you we'l.

If you find any outstanding new varieties or bud sports, write us. It may be a chance seedling. If fruit send us samples when it is ready to pick. Mark the tree or limb on which this new variety fruited.



RILAND

Apricot Tree

2nd Year After Planting

Loaded with Fruit



A ("C & O") Peach Orchard at White Bluffs, Washington
15 months after planting. (Trees 10 to 12 feet high.)



A Local Express Shipment Of Candoka Peaches To The American Fruit Growers Magazine, Cleveland, Ohio.
They were re-distributed by parcel post to about 400 prominent horticulturists throughout the country.

**PURCHASE AGREEMENT FOR TRADE MARKED, PATENTED
AND NUMBERED VARIETIES**

The following agreement between the undersigned and the Columbia & Okanogan Nursery Company refers to the purchase by the undersigned of

Richard (Trademark Registered) Delicious Apple

Blackjon (Trademark Registered) Apple

Blaxtayman (Trademark Registered) Apple

SeeandO (Trademark Registered) Winesap Apple

SeeandO (Trademark Registered) English Walnut

Blackmack (Trademark Registered) Apple

Shotwell Delicious Apple, U. S. Plant Pat. No. 90

Candoka Peach (U. S. Plant Patent No. 51)

Riland Apricot (U. S. Plant Patent No. 74)

Rio-Oso-Gem Peach (U. S. Plant Patent No. 89)

Redelberta Peach (Trademark Registered) (U. S. Plant Patent applied for)

..... **No.**..... **No.**..... **No.**.....

..... **No.**..... **No.**..... **No.**.....

If order contains any of above trees, scions, or buds, the following agreement becomes a part of the terms and conditions of sale applying to this order.

In consideration of the agreement of the undersigned not to give away or sell or permit any one else to give away or take any of the above (trees) (scions) (buds) or any cuttings therefrom or any progeny thereof, for a period of twenty-five (25) years after any such (trees) (scions) (buds) are so furnished and the further consideration specified on the reverse of this order, the Columbia & Okanogan Nursery Company agrees to furnish varieties herein referred to.

The undersigned agrees in case of disposition of the property on which any of the above trees are planted, or scions or buds set, to make this agreement a condition of transfer. The above agreement also applies to any other of above trees, scions or buds that may be furnished in the future to the undersigned by the Columbia & Okanogan Nursery Company.

NOTE! Unauthorized propagation of plant patented varieties is prohibited by U. S. Patent Laws.

CONDITIONS OF SALE

I agree to call or send for the stock purchased herein at which time it is to be in good condition, and I agree to receive shipment promptly on being notified of its arrival, after which time it will be at purchaser's risk. If through want of stock, any part of this order cannot be filled, this contract holds good for whatever part may be delivered, the price of omitted articles to be deducted from amount of bill. If any unavoidable cause prevents Fall Delivery of Fall orders, this contract to hold good for the delivery of this order the following Spring. Non-delivery of stock is excused in case of fire, frost, floods, drouth, strikes, shortage of nursery stock or other causes beyond the seller's control.

Upon receipt of stock, I will inspect it carefully and if it is not satisfactory, I will notify the Nursery office immediately and will not plant it until I hear from the Nursery. If stock does not grow satisfactorily, I will notify the Nursery office within thirty days after planting. The Nursery assumes no responsibility unless any complaints are received as specified above. It is mutually agreed that in case any stock sold on this order shall prove untrue to name, the Nursery shall either refund the purchase price or replace free, at the option of the purchaser and shall in no case be held further responsible.

In case suit is brought to collect for this purchase or any portien thereof, it is agreed that at the option of the Nursery the venue of said suit may be laid in Chelan County, Washington Interest at rate of 8% charged on any unpaid balance.

It is agreed that the entire contract is written and printed herein and no agreement or outside bargain by the salesman shall in any way affect this contract.

Read above carefully; it is part of your signed order.

Give the names below of two reliable business men who are acquainted with the purchaser.

Name

P. O. State

Business

Name

P. O. State

Business

Checked By

Indexed By

AGG By

D. R. By

Date 193... No.

I,, have this day bought of the Columbia & Okanogan Nursery Company, Wenatchee, Washington, the following bill of nursery stock, in accordance with conditions printed on the front and reverse sides of this order form, at the prices set opposite each respective article below, for which I agree to pay cash on delivery (Evergreens and other items as specified in our catalogue are F. O. B. Wenatchee.)

at the town of State of
(Point of Delivery)

In the season of 193..., and I agree
(Insert "Fall" or "Spring" Delivery)
not to countermand this order.

NO.	VARIETIES	SIZE FEET	PRICE EACH	DOL.	CTS.

ALL CHECKS, MONEY ORDERS, ETC. ARE TO BE MADE PAYABLE TO THE NURSERY COMPANY



PURCHASER AGREES TO AND ACCEPTS ALL CONDITIONS OF THE PURCHASE AGREEMENT ON REVERSE SIDE, WHICH IS A PART OF THIS ORDER CONTRACT, AND APPLIES TO BOTH TRADE MARKED, PATENTED AND NUMBERED VARIETIES AS DESIGNATED.

Total
Amt. Prepaid
Balance Unpaid

In consideration of the above, we agree to furnish the stock specified herein subject to the conditions printed on the front and reverse sides of this order form. Salesmen are not authorized to change the varieties, terms, or conditions of this contract. All communications concerning orders must be sent direct to the Nursery office.

COLUMBIA & OKANOGAN NURSERY COMPANY

Signature

SEE Post Office State.....

OTHER R. F. D. No..... Box No..... P. O. Box No.....

SIDE Number Street

Salesman

Office Copy

**PURCHASE AGREEMENT FOR TRADE MARKED, PATENTED
AND NUMBERED VARIETIES**

The following agreement between the undersigned and the Columbia & Okanogan Nursery Company refers to the purchase by the undersigned of

- Richard (Trademark Registered) Delicious Apple**
- Blackjon (Trademark Registered) Apple**
- Blaxtayman (Trademark Registered) Apple**
- SeandO (Trademark Registered) Winesap Apple**
- SeandO (Trademark Registered) English Walnut**
- Blackmack (Trademark Registered) Apple**
- Shotwell Delicious Apple, U. S. Plant Pat. No. 90**
- Candoka Peach (U. S. Plant Patent No. 51)**
- Riland Apricot (U. S. Plant Patent No. 74)**
- Rio-Oso-Gem Peach (U. S. Plant Patent No. 89)**
- Redelberta Peach (Trademark Registered) (U. S. Plant Patent No. 232)**
-**No.**.....**No.**.....**No.**.....
-**No.**.....**No.**.....**No.**.....

If order contains any of above trees, scions, or buds, the following agreement becomes a part of the terms and conditions of sale applying to this order.

In consideration of the agreement of the undersigned not to give away or sell or permit any one else to give away or take any of the above (trees) (scions) (buds) or any cuttings therefrom or any progeny thereof, for a period of twenty-five (25) years after any such (trees) (scions) (buds) are so furnished and the further consideration specified on the reverse of this order, the Columbia & Okanogan Nursery Company agrees to furnish varieties herein referred to.

The undersigned agrees in case of disposition of the property on which any of the above trees are planted, or scions or buds set, to make this agreement a condition of transfer. The above agreement also applies to any other of above trees, scions or buds that may be furnished in the future to the undersigned by the Columbia & Okanogan Nursery Company.

NOTE! Unauthorized propagation of plant patented varieties is prohibited by U. S. Patent Laws.

CONDITIONS OF SALE

I agree to call or send for the stock purchased herein at which time it is to be in good condition, and I agree to receive shipment promptly on being notified of its arrival, after which time it will be at purchaser's risk. If through want of stock, any part of this order cannot be filled, this contract holds good for whatever part may be delivered, the price of omitted articles to be deducted from amount of bill. If any unavoidable cause prevents Fall Delivery of Fall orders, this contract to hold good for the delivery of this order the following Spring. Non-delivery of stock is excused in case of fire, frost, floods, drouth, strikes, shortage of nursery stock or other causes beyond the seller's control.

Upon receipt of stock, I will inspect it carefully and if it is not satisfactory, I will notify the Nursery office immediately and will not plant it until I hear from the Nursery. If stock does not grow satisfactorily, I will notify the Nursery office within thirty days after planting. The Nursery assumes no responsibility unless any complaints are received as specified above. It is mutually agreed that in case any stock sold on this order shall prove untrue to name, the Nursery shall either refund the purchase price or replace free, at the option of the purchaser and shall in no case be held further responsible.

In case suit is brought to collect for this purchase or any portion thereof, it is agreed that at the option of the Nursery the venue of said suit may be laid in Chelan County, Washington Interest at rate of 8% charged on any unpaid balance.

It is agreed that the entire contract is written and printed herein and no agreement or outside bargain by the salesman shall in any way affect this contract.

Read above carefully; it is part of your signed order.

I,, have this day bought of the **Columbia & Okanogan Nursery Company**, Wenatchee, Washington, the following bill of nursery stock, in accordance with conditions printed on the front and reverse sides of this order form, at the prices set opposite each respective article below, for which I agree to pay cash on delivery (Evergreens and other items as specified in our catalogue are F. O. B. Wenatchee.)

at the town of State of
(Point of Delivery)

In the season of193..., and I agree
(Insert "Fall" or "Spring" Delivery)
not to countermand this order.

NO.	VARIETIES	SIZE FEET	PRICE EACH	DOL.	CTS.

ALL CHECKS, MONEY ORDERS, ETC. ARE TO BE MADE PAYABLE TO THE NURSERY COMPANY



PURCHASER AGREES TO AND ACCEPTS ALL CONDITIONS OF THE PURCHASE AGREEMENT ON REVERSE SIDE, WHICH IS A PART OF THIS ORDER CONTRACT, AND APPLIES TO BOTH TRADE MARKED, PATENTED AND NUMBERED VARIETIES AS DESIGNATED.

Total	-----
Amt. Prepaid	-----
Balance Unpaid	-----

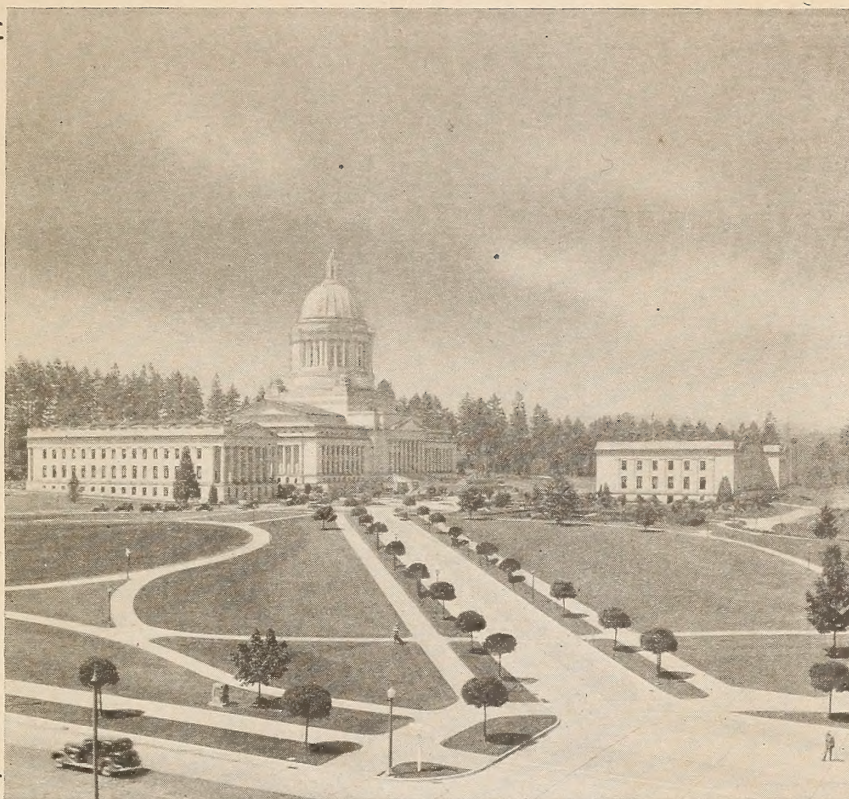
In consideration of the above, we agree to furnish the stock specified herein subject to the conditions printed on the front and reverse sides of this order form. Salesmen are not authorized to change the varieties, terms, or conditions of this contract. All communications concerning orders must be sent direct to the Nursery office.

COLUMBIA & OKANOAN NURSERY COMPANY

Signature
 SEE Post Office State.....
 OTHER R. F. D. No..... Box No..... P. O. Box No.....
 SIDE Number Street.....
 Salesman

GLOBE LOCUST

on
Capitol
Grounds
Olympia
Washington



NEW
Fast Growing
Formal
Dense
Dark Green
No
Seed Pods

The people of the State of Washington are justly proud of the beautifully landscaped grounds at the State Capitol. The above picture shows the effective use of the Globe Locust on the capitol grounds at Olympia. This tree is described elsewhere in this catalogue.

You Can Know the Joy of a Well Planted Home

Few things pay such great and continuous dividends of genuine satisfaction as well planted home grounds. The joy of creating beauty, and the knowledge that your home place will make a favorable impression on friends, neighbors and passers-by, is a source of pride and satisfaction.



Childhood Impressions are Marks of Character

Everyone recognizes the important part environment plays in shaping the character of a child. Fortunate the child that passes through the impressionable years of its life in surroundings made beautiful with trees, plants and flowers.



A Thrilling and Profitable Hobby

Beautifying the home grounds offers endless opportunity for a healthful and thrilling hobby. Whether it be a specialty such as roses, bulbous plants, perennials, rock garden or aquatics, with some attention to good landscape design; any or all of these special lines can be incorporated in or become the feature of the well planted home grounds, not only adding to the beauty, but increasing the value of your property.

COMPLETE

LANDSCAPE

SERVICE



It's Not a HOME Until It's PLANTED

Your Home Can Be Beautiful

Let Us Help YOU Make It So

LANDSCAPING the Home Grounds need not be expensive, nor require a life time to achieve. Careful planning and selecting of well grown, mature specimens of ORNAMENTAL TREES, EVERGREENS, SHRUBS, ROSES and PERENNIALS, from Our Large Stock, will transform your yard into a pretty GARDEN, filled the very first summer, with an abundance of Fragrant Blossoms.

Use the ("C & O") Landscape Service

It is our business to make complete plans for large or small properties, estates and parks. Fast, accurate service. Our Landscape Department will gladly offer helpful suggestions to those desirous of selecting proper trees and shrubs for the right places for beautiful effects.

YOU are invited to visit our Landscape Display Grounds adjacent to our Office and Packing House. Here you will find samples of our large stock of Evergreens, Ornamental Trees, Shrubs, Roses, Perennials, Etc. You are always welcome.



WE CAN HELP YOU. Let us help you with your planting plans --help you select the right variety for each location, and tell you how to plant and care for it successfully. Write, phone or call. There is no charge for these suggestions.

THE OUTDOOR LIVING ROOM

Transform a portion of the "back yard" into a beautiful living room.

A carpet of grass . . . trees and shrubs to provide privacy . . . and hardy flowers and roses for color and interest.

An Outdoor Living Room provides a place for children to play, safe from the dangers of the street. It affords a place for healthful hours spent out-of-doors amid beautiful, restful surroundings without the necessity of long drives and doubtful situations.



Visit, or Write Us, Regarding Your Landscape Problems

Columbia & Kanogan NURSERY COMPANY
Wenatchee, Washington